

Howe Sound Cumulative Effects Project Update



Howe Sound Community Forum
Furry Creek, May 4, 2018

Jeff Juthans, Land & Resource Specialist, South Coast
Ministry of Forests, Lands, Natural Resource Operations and Rural Development

Howe Sound CE Project (Project Area & Values)

Provincial CE Values

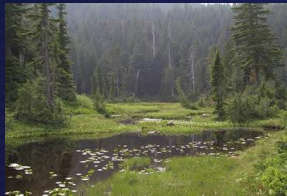
Aquatic Ecosystems



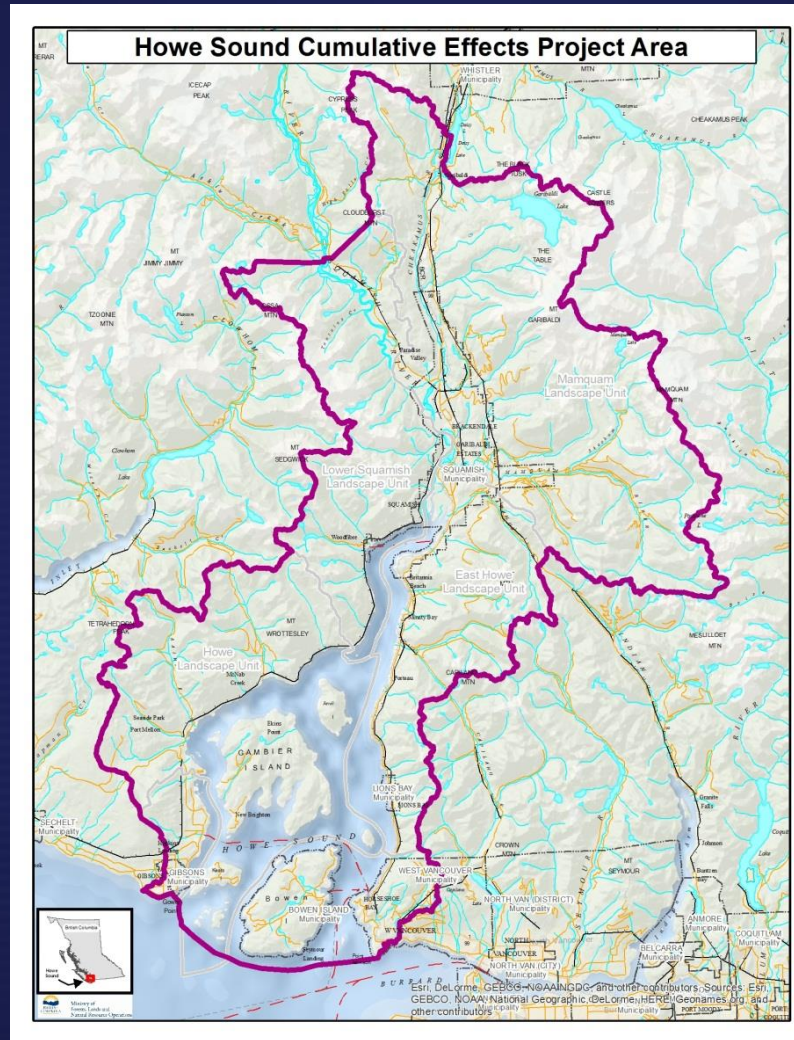
Old Growth



Forest Biodiversity



Grizzly Bear



South Coast CE Values

Roosevelt Elk



Marbled Murrelet



Visual Quality



Howe Sound CE Project (Major Deliverables)

BRITISH COLUMBIA
Enter a keyword or phrase to search

Home / Environmental Protection & Sustainability / Natural Resource Stewardship / Cumulative Effects Framework / Regional Assessments / South Coast /

Howe Sound Cumulative Effects Project

Project Origin, Purpose and Phases

Over the past several years, increased land and resource development applications in the Howe Sound area have prompted some local governments and stakeholders to express concern about the potential for cumulative effects (CE) on environmental values such as recovering land and marine ecosystems.

In January 2014, the province approved the phased implementation of the Cumulative Effects Framework (CEF) in BC and began to collaborate with local governments and First Nations to explore the possibility of initiating a CE assessment project tailored to the Howe Sound area. The province approved the development of a Howe Sound CE Project in the summer of 2015 and committed to completing current condition assessments for some key initial CE values that were also of interest to local First Nations and other levels of government.

The Howe Sound CE Project represents the Province's first application of the CEF to the South Coast Natural Resource Region. The project will help with the implementation of a coordinated, multi-sector approach to assessing and managing cumulative effects. The project will also provide valuable transparent baseline and trend information on key Howe Sound values to better inform the

Current Condition Assessment Web Maps

- Aquatic Ecosystems
- Forest Biodiversity
- Old Growth Forest
- Forest Visual Quality
- Grizzly Bear
- Roosevelt Elk
- Marbled Murrelet

Current Condition Assessment Reports

- Aquatic Ecosystems
- Forest Biodiversity
- Old Growth
- Forest Visual Quality
- Grizzly Bear
- Roosevelt Elk
- Marbled Murrelet

Cumulative Effects Framework
Howe Sound Cumulative Effects Project

Aquatic Ecosystems

Visual Quality

Old-Growth Forest

Marbled Murrelet

Grizzly Bear

Forest Biodiversity

Roosevelt Elk – Current Condition Report

South Coast Natural Resource Region
Ministry of Forests, Lands and Natural Resource Operations
September 5, 2017

Howe Sound Cumulative Effects Assessment: Roosevelt Elk

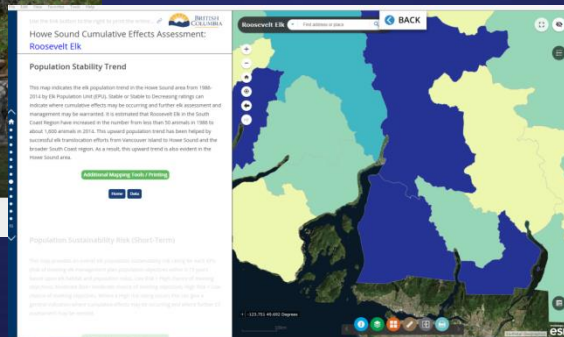
Current Condition Assessment

Value Description
Management Objectives
CE Assessment Procedures
Limitations
Considerations
Initial Interpretation
Relevant Links

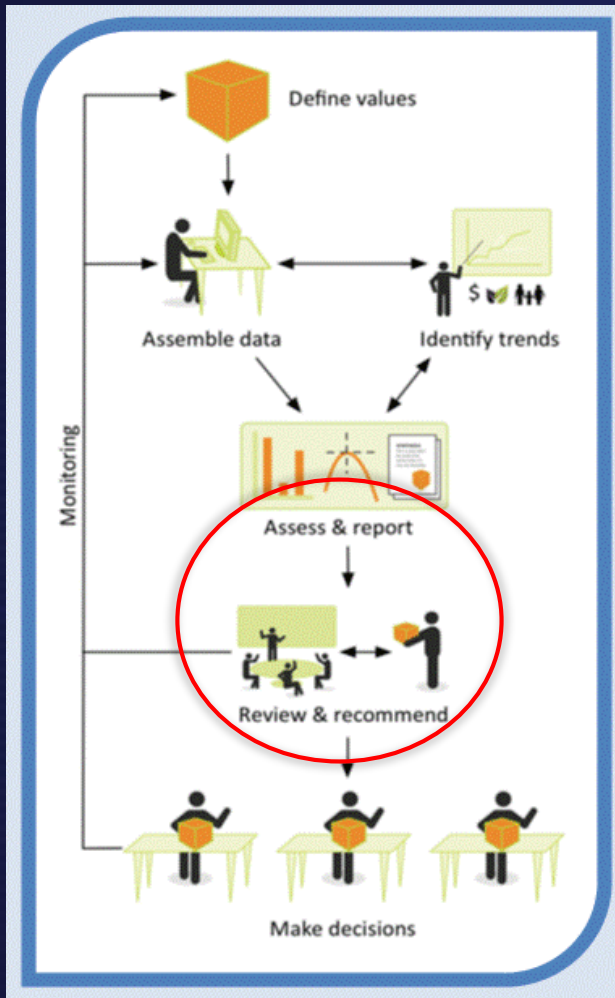
Maps

- Population Stability Trend
- Population Sustainability Risk (short term)
- Population Sustainability Risk (long term)
- Indicator: Forage/Cover Availability
- Indicator: Population Resilience
- Indicator: Predation Risk
- Indicator: Unregulated Hunting
- Indicator: Forage/Cover Interference
- Indicator: Winter Range Requirement
- Indicator: Winter Range Availability and Quality

Data



Project Next Steps (Assessment Reporting to Recommendations)



- FLNRO staff to add further interpretation to current condition reports (May 2018)
- Will publish assessment results/data on website & follow-up with local First Nations & stakeholders (Fall 2018)
- Where warranted, we will explore the development of management recommendations with local First Nations and key stakeholders (2018/2019)

Take Home Message

The Province still has some work to do but it remains fully committed to CE Assessment, long-term monitoring and shared stewardship in the Howe Sound area

