



BRITISH
COLUMBIA



Howe Sound Cumulative Effects (CE) Project

Project Status Update:

“Project Implementation”

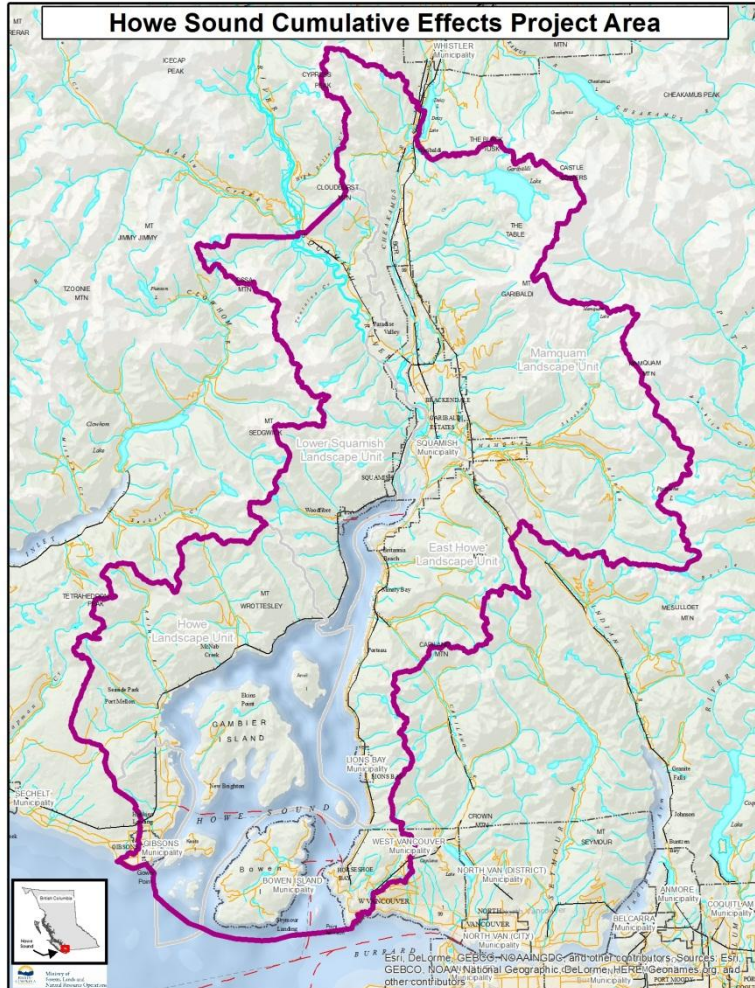
Howe Sound Community Forum Meeting

October 16, 2015

Jeff Juthans, Land & Resource Specialist, South Coast Region,
Ministry of Forests, Lands, and Natural Resource Operations (FLNRO)

Howe Sound CE Project Update

Project Area and Values



Proposed CE Value Components

- ✓ Aquatic Ecosystems-watershed condition
- ✓ Forest Ecosystems- old growth (OGMAs)
- ✓ Forest Ecosystems- biodiversity (seral stage)
- ✓ Priority Wildlife- Grizzly Bear (habitat)

2015/16

- ✓ Priority Wildlife- Marbled Murrelet (habitat)
- ✓ Priority Wildlife- Elk (habitat)

> Air Quality

> Water Quality (marine water quality)

> Estuaries (habitat quantity/quality)

> Herring (herring spawn distribution)

- Watershed Condition (freshwater run-off)
- Visual Quality- Forest VQOs
- Water Quality- watershed (water quality)

2016/17

Howe Sound CE Project Update

Work Completed to Date

- ✓ Project Implementation Plan (July 2015- Mar 2017)
- ✓ FLNR's Regional CE Implementation Roles/Structure
- ✓ Draft CE assessments for 4 Prov. Value Components (Watershed , Old Growth, Seral Stage, Grizzly Bear Habitat)
- ✓ Confirmed 2 Reg. Value Components for 2016/17 (Marbled Murrelet & Elk)
- ✓ Initial communications with local First Nations, other governments and provincial agencies



Howe Sound CE Project Update

Future Work in 2015/16

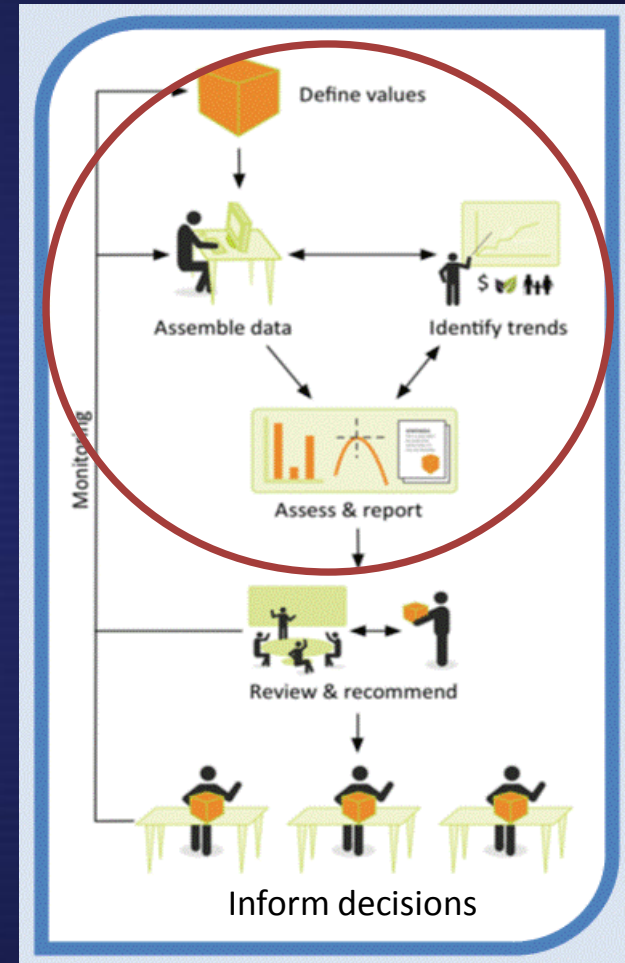
- Share pending Prov. CEF policy and extension products
- Tailor initial 4 CE assessments for Howe Sound area & share publicly
- Confirm the value components for the 2016/17 CE assessments
(Values Foundation work for 2-9 value components)
- Follow-up on collaboration opportunities and linkages
(e.g. First Nations, Fed. Gov, Van Aquarium-CORI, MaPP, EAO processes)
- Continue our communications with local First Nations, governments and other interested parties



Howe Sound CE Project Update

Take Home Messages

- We have moved from project planning to implementation (focus is currently on Values Foundation & Assessment work)
- A lot of preparatory work has been accomplished
- CE assessment information products are coming soon.
- Initial Howe Sound CE assessments expected this fiscal yr
- * This Project represents the beginning of long-term monitoring and CE assessment for key environmental values in the Howe Sound area and broader South Coast Region.



Howe Sound CE Project Update



Thank you for your support and collaboration to date!

