



BRITISH
COLUMBIA



A Status Update on the Howe Sound Cumulative Effects (CE) Project

Howe Sound Community Forum Meeting
May 1, 2014

Jeff Juthans, Land & Resource Specialist, South Coast Region, FLNRO

Steve Kachanoski, Project Manager, CE Values Foundation, NRS Transformation Secretariat

Ministry of Forests, Lands, and Natural Resource Operations (FLNRO)

The top of the slide features a decorative banner. On the left, the flag of British Columbia is shown waving, with its characteristic red and white stripes and a blue canton containing a gold crown. To the right of the flag is a scenic view of a coastal landscape at sunset or sunrise, with mountains in the background and a body of water in the foreground.

Presentation Outline

- 1) Brief Project Backgrounder**
- 2) Project Status Update**
- 3) Description of CE Value Assessments**
- 4) Future Use of CE Value Assessments**
- 5) Project Next Steps**
- 6) Questions and Answers**

Brief Project Backgrounder

Presentation Context

- *At the last HSCF meeting, the Province shared the proposed Howe Sound CE Project and asked if there was general support for the Project*
- *Indications were that there was general HSCF support for the Province to implement the proposed Project*
- *In 2015, the Province committed to implementing the Howe Sound CE Project starting in 2015/2016 fiscal year*

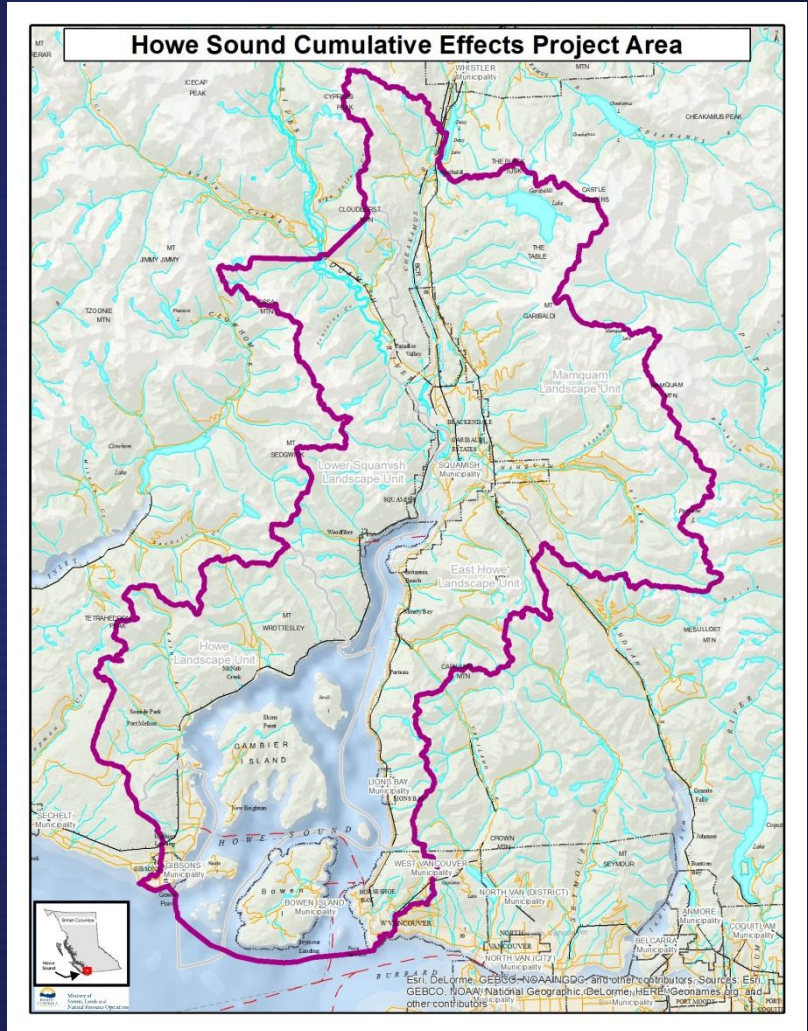


Brief Project Backgrounder

Project Description

Proposed Value Components for Project

- * Aquatic Ecosystems-watershed condition (terrestrial fish habitat)
 - * Forest Ecosystems- old growth (OGMAs)
 - * Forest Ecosystems- biodiversity
 - * Priority Wildlife- Grizzly Bear (habitat)
- 2015
- Priority Wildlife- Marbled Murrelet (habitat)
 - Priority Wildlife- Elk (habitat)
 - Water Quality- watershed (water quality)
 - Air Quality
 - Visual Quality- Forest VQOs
 - Estuaries (habitat quantity/quality)
 - Herring (herring spawn distribution)
 - Watershed Condition (freshwater run-off)
 - Water Quality (marine water quality)
- 2016



Project Status Update

Project Implementation Status

Howe Sound CE Project Work Completed:

- *Project Scoping*
- *Prov. Project Team formation*
- *Draft Technical procedures for 4 of the Project's proposed value components (close to completion)*

Howe Sound CE Project Work Underway:

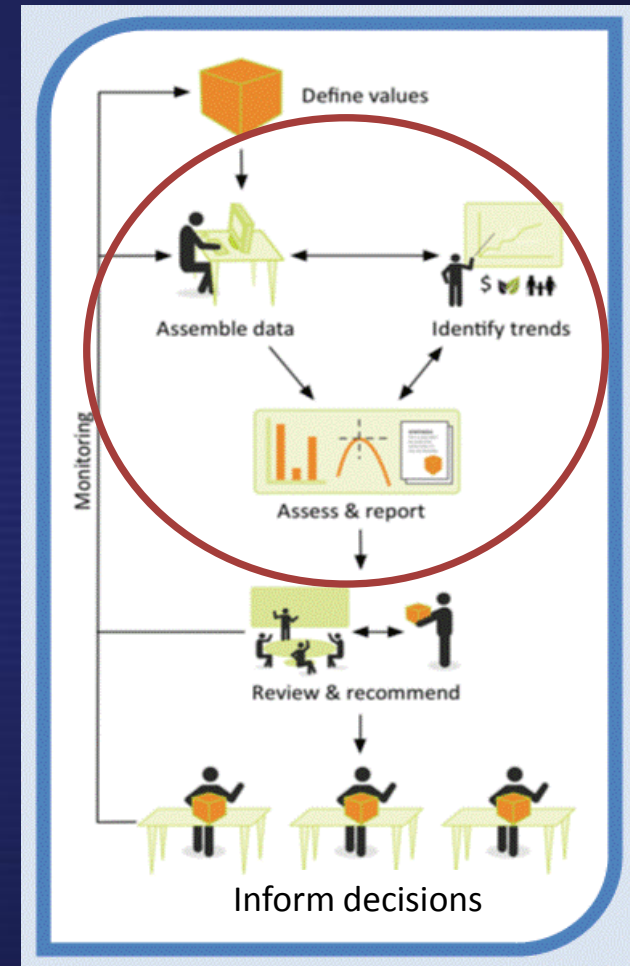
- *Development of the Project work plan*
- *Approval of Related Policy & Procedures for CE integration into Prov. decision-making*
- *Confirmation of funding for remaining Project Values Foundation work*
- *Continuation of communications with local First Nations and governments*
- *Exploration of Fed.- Prov. CE Collaboration*



Description of CE Value Assessment

What is a CE Value Assessment?

- *Periodic broad scale assessment based on a set of priority values*
- *Assessment of current condition is foundational*
- *Assessment of foreseeable future condition by considering effects of near-term activities*
- *Assessment information is made openly available*

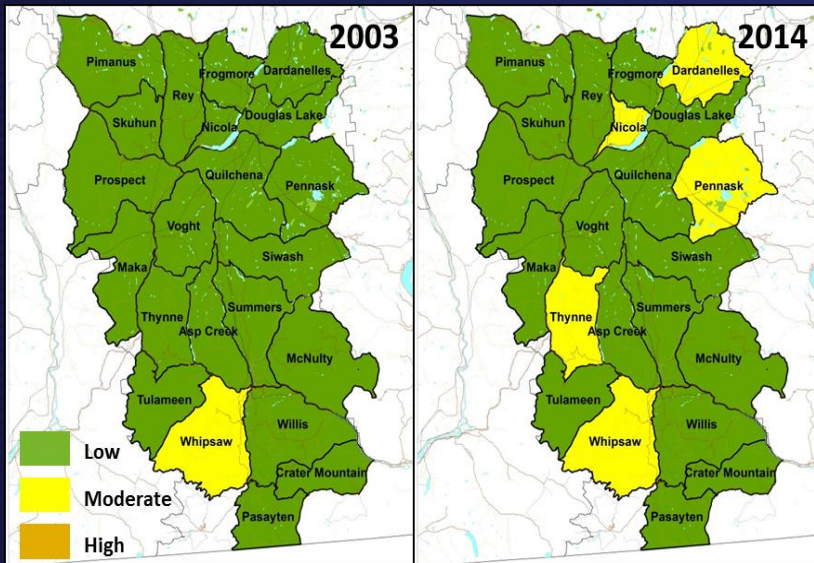


Description of CE Value Assessment

What is a CE Value Assessment?

Assessment of current condition is foundational

Merritt CEA – Moose Habitat example



Draft results

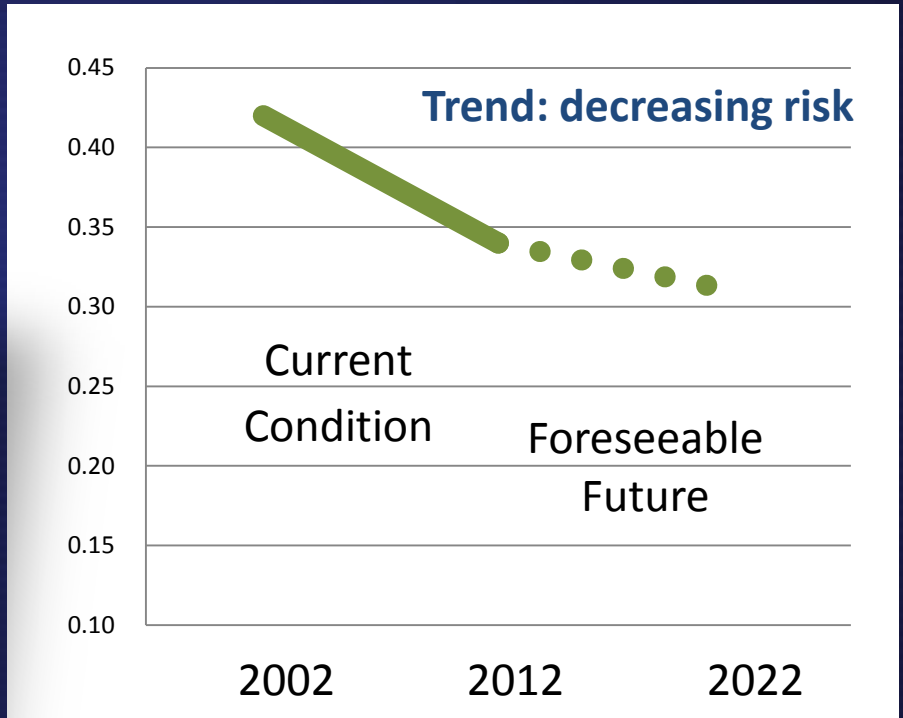
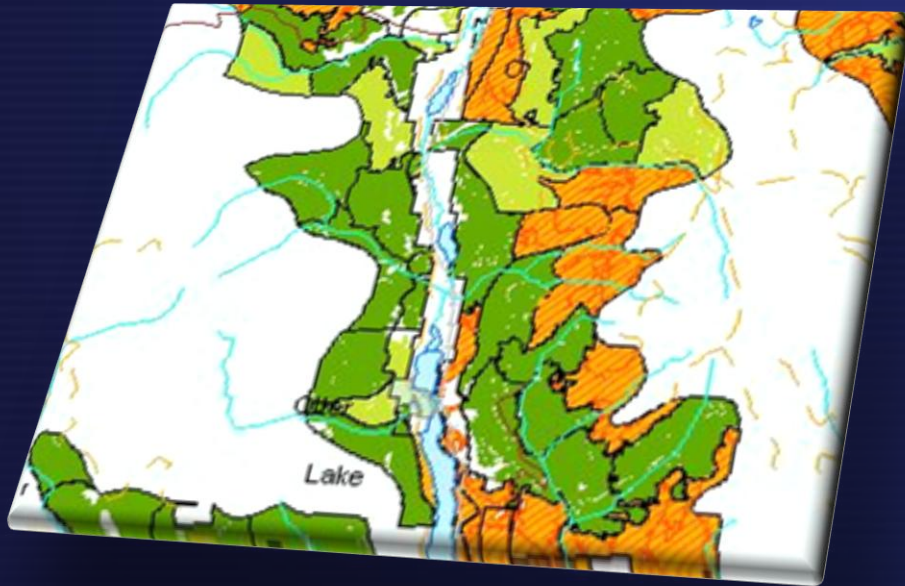
Moose Population Hazard and Risk - Merritt TSA 2003 - 2014											
Planning Cell	% Early Seral (0-3m)		Habitat Hazard		Predation Hazard		Hunting Hazard		Cons.	Moose Risk	
	2003	2014	2003	2014	2003	2014	2003	2014		2003	2014
Asp Creek	8.6	18.2	L	L	L	L	L	L	MOD	LOW	LOW
Crater Mtn.	1.6	14.3	L	L	L	L	L	L	MOD	LOW	LOW
Dardanelles	12.1	33.6	L	M	L	L	L	M	MOD	LOW	MOD
Douglas Lake	6.7	8.3	L	L	L	L	L	L	MOD	LOW	LOW
Frogmore	10.1	28	L	L	L	L	L	L	MOD	LOW	LOW
Maka	4.4	4.6	L	L	L	L	L	L	MOD	LOW	LOW
McNulty	17.1	27.2	L	L	L	L	L	L	MOD	LOW	LOW
Nicola	19.4	33.3	L	M	L	L	L	M	MOD	LOW	MOD
Pasayten	9.6	8.8	L	L	L	L	L	L	MOD	LOW	LOW
Pennask	9.5	30.5	L	M	L	L	L	M	MOD	LOW	MOD
Pimanus	9	29.7	L	L	L	L	L	L	MOD	LOW	LOW
Prospect	1.9	4.4	L	L	L	L	L	L	MOD	LOW	LOW
Quilchena	5.7	16.1	L	L	L	L	L	L	MOD	LOW	LOW
Rey	5.1	18.9	L	L	L	L	L	L	MOD	LOW	LOW
Siwash	12.3	28.9	L	L	L	L	L	L	MOD	LOW	LOW
Skuhun	9.9	27.9	L	L	L	L	L	L	MOD	LOW	LOW
Summers	12.8	26.6	L	L	L	L	L	L	MOD	LOW	LOW
Thynne	8.4	10.3	L	L	L	M	L	L	MOD	LOW	MOD
Tulameen	2.8	4.5	L	L	L	L	L	L	MOD	LOW	LOW
Voght	3.5	12.5	L	L	L	L	L	L	MOD	LOW	LOW
Whipsaw	24.8	14.0	L	L	M	M	L	L	MOD	MOD	MOD
Willis	17.1	18.2	L	L	L	L	L	L	MOD	LOW	LOW
Average:	9.6	19.1	OVERALL RATING						LOW	LOW	

Description of CE Value Assessment

What is a CE Value Assessment?

Assessment of foreseeable future condition

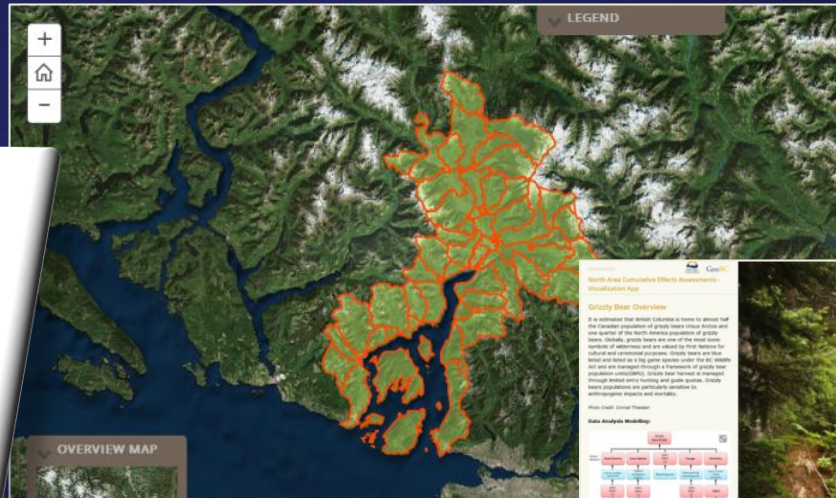
Merritt CEA – Mule Deer Habitat Condition example



Description of CE Value Assessment

What is a CE Value Assessment?

Assessment information is made available

North Area Cumulative Effects Assessment - Qualitative Map

Grizzly Bear Overview

It is estimated that British Columbia is home to almost half the Canadian population of grizzly bears. Grizzly bears are one of the most iconic species in the North American wilderness and are valued by First Nations for their traditional and cultural uses. Grizzly bears are also valued for their meat and hide as a big game species under the fur, wildlife and trophy management through a framework of grizzly bear population conservation. Grizzly bear harvest is managed through habitat conservation and population management. Grizzly bear populations are particularly sensitive to anthropogenic impacts and mortality.

Photo Credit: Corinne Peterson

Wildlife Analysis Workflow



Map Use in the South Peace Alignment Project in and around Peace River

Map Use	High	Medium	Low	Very Low
High	100%	100%	100%	100%
Medium	100%	100%	100%	100%
Low	100%	100%	100%	100%
Very Low	100%	100%	100%	100%

Overall Map Use

Map Use	High	Medium	Low	Very Low
High	100%	100%	100%	100%
Medium	100%	100%	100%	100%
Low	100%	100%	100%	100%
Very Low	100%	100%	100%	100%

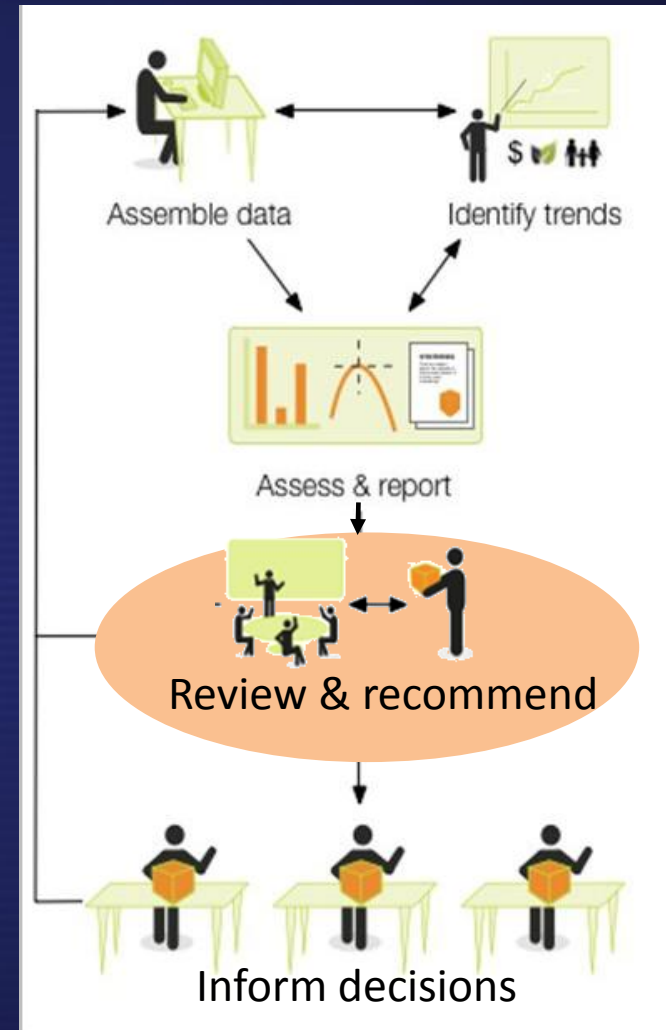
Value	Component	Current Condition 2012		Future Condition 2022	
		Risk	Trend	Risk	Trend
Mule Deer	Habitat	High	↓	Moderate	↑
Visual Quality	Visual Quality	Moderate	↑	High	↑
Grizzly Bear	Mortality	High	↑	High	↑
Timber Capability	THLB	Moderate	↑	Moderate	↑

Future Use of CE Value Assessments

How Will the Assessments Be Used?

Role of Regional Interagency Team

- *Review CE Assessment Reports, consider risks and regional context*
- *Engage with First Nations and stakeholders on CE assessment results and options*
- *Recommend management actions to mitigate risks to priority values*



Future Use of CE Value Assessments

How Will the Assessments Be Used?

Accurate, transparent information leads to better decisions.

Value	Component	Current Condition 2012		Future Condition 2022	
		Risk	Trend	Risk	Trend
Mule Deer	Habitat	High	↓	Moderate	↑
Visual Quality	Visual Quality	Moderate	↑	High	↑
Grizzly Bear	Mortality	High	↑	High	↑
Timber Capability	THLB	Moderate	↑	Moderate	↑

Strategically

- Focus resource planning
- Clarify management objectives
- Determine resource allocations



Operationally

- Further contextual information for all decisions
- Direct inventory, monitoring & research

First Nation Rights & Interests

- Integrate with Traditional Ecological Knowledge
- Assess implications to cultural use



Project Next Steps

2015/2016 Project Tasks

- *Complete project work plan*
- *Complete current condition assessments for 4 Howe Sound value components*
- *Confirm resourcing to develop current condition assessments for remaining values*
- *Continue to build Values Foundation work for remaining values*
- *Further communication with local First Nations other levels of government and stakeholders*
- *Improve linkages to other relevant initiatives and processes (e.g. EA processes, CORI, marine planning interests)*



Questions and Answers



Cumulative Effects Framework

Assessing and Managing Cumulative Effects in British Columbia

