

# Howe Sound / Atl'ka7tsem Marine Reference Guide

Howe Sound Community Forum  
April 26<sup>th</sup>, 2019



# Our deliverables and outcomes

1. Interactive map
2. Narrative resources
3. Relationships
4. Capacity

**Marine Ecosystem Reference Guide** About Get Started Help Send Your Feedback

Search for Location

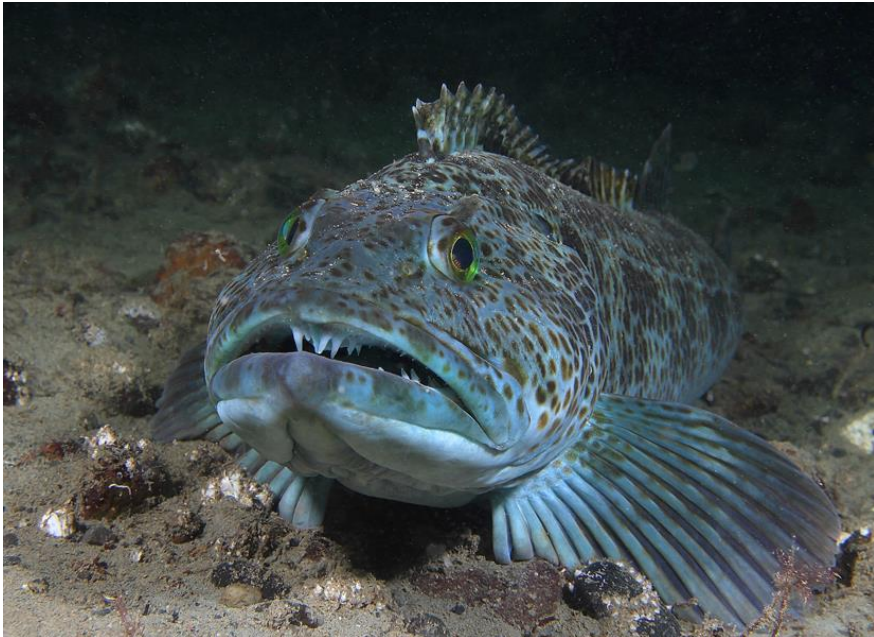
**Recommendations**

✓ = recommended		O = conditionally recommended		X = not recommended	
✓	Adventure Tourism/Commercial Recreation	✓	Industrial General		
X	Aquaculture – Finfish <sup>3</sup>	✓	Log Handling		
X	Aquaculture – Marine Plant <sup>4</sup>	✓	Marinas and Yacht Clubs		
X	Aquaculture – Shellfish <sup>5</sup>	✓	Private Moorage		
✓	Commercial – General	O	Residential (see provision 1)		
✓	Community and Institutional Use	✓	Utilities		
-	Float Cabin Community (see provision 1)				
<b>Activities<sup>6</sup></b>					
	Fishing – Dive (see provision 2)		Fishing – Trap (see provision 2)		
	Fishing – Hand Picking (see provision 3)		Fishing – Trawl (see provision 4)		
	Fishing – Hook and Line (see provision 2)		Marine Transportation (see provision 2, 4, 5)		
	Fishing – Net (see provision 2)		Tourism and Recreation (see provision 5)		

**Layer List**

- ▼ M E R G
  - ▶ MARINE UNITS
  - ▼ AREA DESIGNATIONS
    - ▶  Aquaculture Area- Finfish
    - ▶  Aquaculture Area- Shellfish
    - ▶  Community Development Area
    - ▶  Cultural Management Area
    - ▶  Ecologically Significant Areas
    - ▶  Industrial Use Area
    - ▶  Fishing Area
    - ▶  Marine Transportation Area
    - ▶  Tourism and Recreation Area
  - ▶ MARINE INVEST MODELS



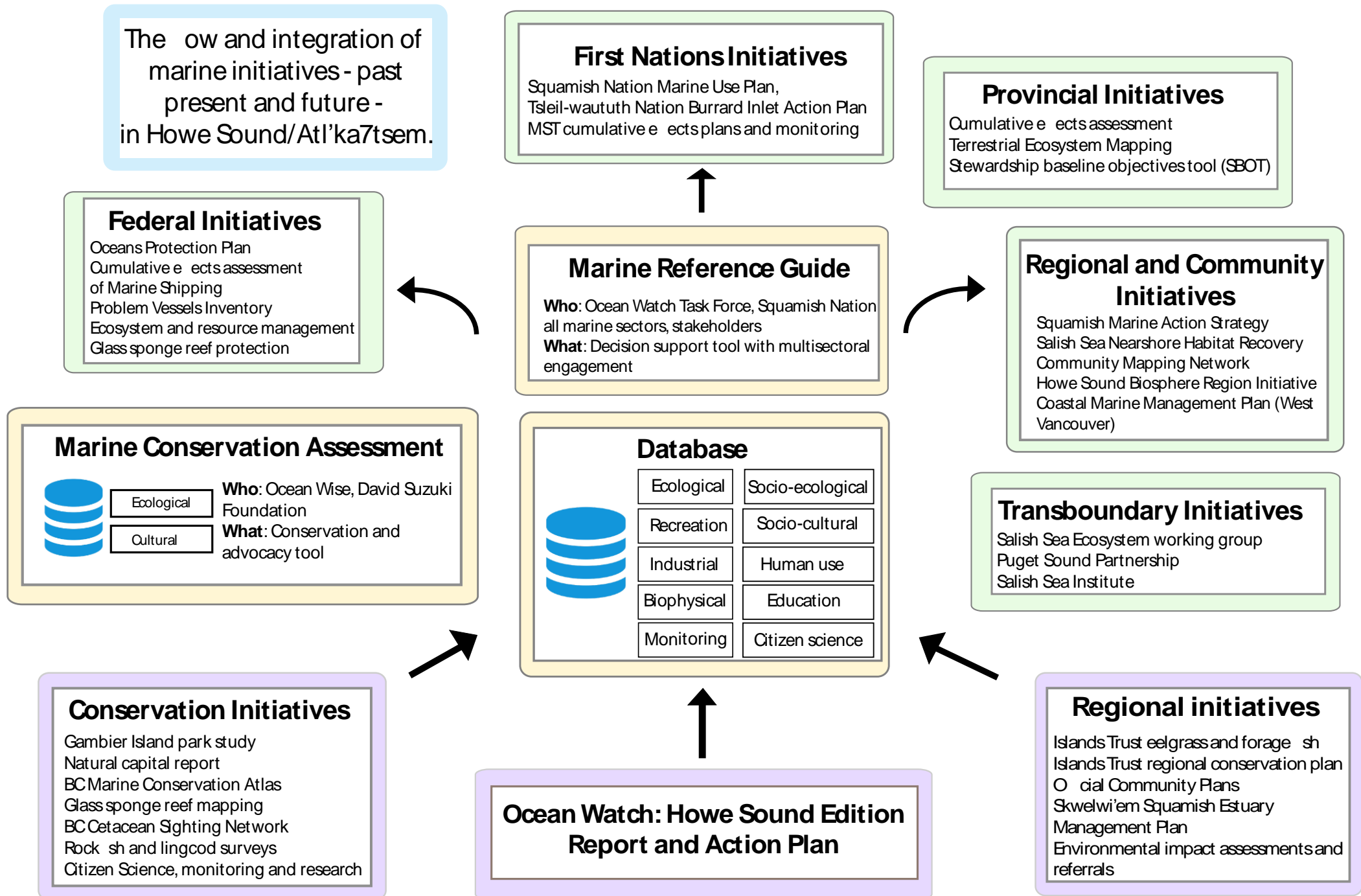


# Our achievements

Project partnerships

Financial support

Research and community engagement







# Partners and supporters

**NORTH GROWTH**  
FOUNDATION

  
**SQUAMISH**  
HARDWIRED *for* ADVENTURE

  
**COASTAL OCEAN  
RESEARCH INSTITUTE**  
AN OCEAN WISE INITIATIVE

  
**SQUAMISH - LILLOOET**  
REGIONAL DISTRICT

  
**BOWEN  
ISLAND**  
Municipality

  
sitka foundation

  
TOWN OF  
GIBSONS

  
**DAVID SUZUKI  
FOUNDATION**  
One nature.

  
**HOWE  
SOUND**  
BIOSPHERE REGION INITIATIVE

  
SUNSHINE COAST  
REGIONAL DISTRICT

GORDON AND BETTY  
**MOORE**  
FOUNDATION

  
Islands Trust



  
**LEVEL**  
YOUTH GRANTING

IN PARTNERSHIP WITH  
vancouver  
foundation

a project of  
**Tides Canada**  
SHARED PLATFORM

# Thank-you

**Fiona Beaty – Project Director**

**[www.howesoundguide.ca](http://www.howesoundguide.ca)**

**[howesoundguide@gmail.com](mailto:howesoundguide@gmail.com)**

** [@HSA\\_MarineGuide](https://twitter.com/HSA_MarineGuide)**