



Stewardship Baseline Objectives Tool (SBOT) Demo



Howe Sound Community CE Webinar

by: Veronica Villar-Singh
Land and Resource Specialist
MARCH 5, 2021



Outline of SBOT Demo

- ▶ SBOT Public-facing website *(have screen opened to the SBOT public website)*
- ▶ Roosevelt Elk and Old Forests SBOT demo
 - ▶ SBOT Components *(Overview Page and Dashboard)*
 - ▶ Dashboard Components *(Indicators and how questions are answered for Elk and OG)*
 - ▶ Key Features and Functionalities *(examples from selected Howe Sound Lus)*

SBOT Public Website [\(link\)](#)

- Access thru Google Search
- SCR's response to visualizing CE assessments and Integrated Monitoring and Reporting
- 5 values currently published (3 Terr, 2 Aqua)
- Other values in development and review (Old Forests and Aquatic Ecosystems)

BRITISH COLUMBIA

Home > Environmental protection and sustainability > Natural Resource Stewardship > Resource Stewardship Tools >

Stewardship Baseline Objectives Tool

The Stewardship Baseline Objectives Tool (SBOT) is currently developed for the South Coast Region. Objectives are implicitly or explicitly set for different economic, social, and environmental values through regulations and policy, land use plans, and operational management objectives. Assessments are prepared to determine how well those objectives are being met through inventory and monitoring initiatives. Government, industry and other partners then take actions to directly manage these values.

SBOT incorporates the [Cumulative Effects Framework \(CEF\)](#) results where available and appropriate, and adds additional regional and provincial data sets, such as habitat supply and inventory data. SBOT allows the end user to select and receive individual assessments for multiple existing features, such as Landscape Units, population units, [Wildlife Habitat Areas](#), and protected areas. SBOT also allows the end user to create specific area of interest (or feature) for assessment.

There are over twenty (20) priority terrestrial and aquatic values that are being managed in the region. There are twelve SBOT values currently in development, and multi-value SBOTs are also in development such as for Integrated Investment Planning, (IIP), and Mature Forest.

The interactive mapping tool provides both generalized information and site-specific information for efficient decision-making. SBOT functionalities include the ability to create specific areas of interest (or features) for assessment and create a report on the fly for a chosen area of interest. The tool also supports in answering value-specific questions in response to a potential project environmental impacts and mitigation measures.

Project Area

Click on the image below for a detailed map of the current project area.

SBOT Webmaps

Launch SBOT for any of the values specified below:

- [Grizzly Bear](#)
- [Northern Spotted Owl](#)
- [Oregon Spotted Frog](#)
- [Roosevelt Elk](#)
- [White Sturgeon](#)

SBOT Documents

- [User Guide \(PDF 4.5MB\)](#)
- [Frequently Asked Questions \(PDF 122KB\)](#)

Related Links

- [Integrated Monitoring and Assessment Reporting](#)
- [Modernized Land Use Planning](#)
- [Cumulative Effects Framework](#)
- [Land Use Objectives Regulation](#)
- [Wildlife Habitat Areas](#)
- [Protected Lands and Waters in B.C.](#)

Contact Information

Contact us if you have questions about the Stewardship Baseline Objectives Tool.

sbot@gov.bc.ca

PREMIER'S AWARD

Roosevelt Elk SBOT: Key Features and Functionalities

- SBOTs are developed using ArcGIS online
- Utilizing pre-canned features, e.g. story map and dashboard widgets.

[Draft] SBOT - Roosevelt Elk

Version 1.0 Last Updated January 8, 2019

BRITISH COLUMBIA

Overview Dashboard

DISCLAIMER: Stewardship Baseline Objectives Tools (SBOTs) are currently DRAFT and should be used with some caution as current information may change or new information may be made available.

[Visit the SBOT Homepage](#)

Photo courtesy of Dan Guertin, RPBio, Senior Wildlife Biologist

Welcome

Distribution & Ecology


Social, Cultural, Ecological & Economic Value

Implications for Other Species

Status

Threats

Regulatory Framework




Overview Page:

One-stop-shop for Elk value information including:

- Habitat distribution and Ecology
- Socio-Cultural, Ecological, and Economic Value
- General Status and Threats of the Species
- Regulatory Framework
- Recovery Goals and Management Objectives
- Inventory and Monitoring

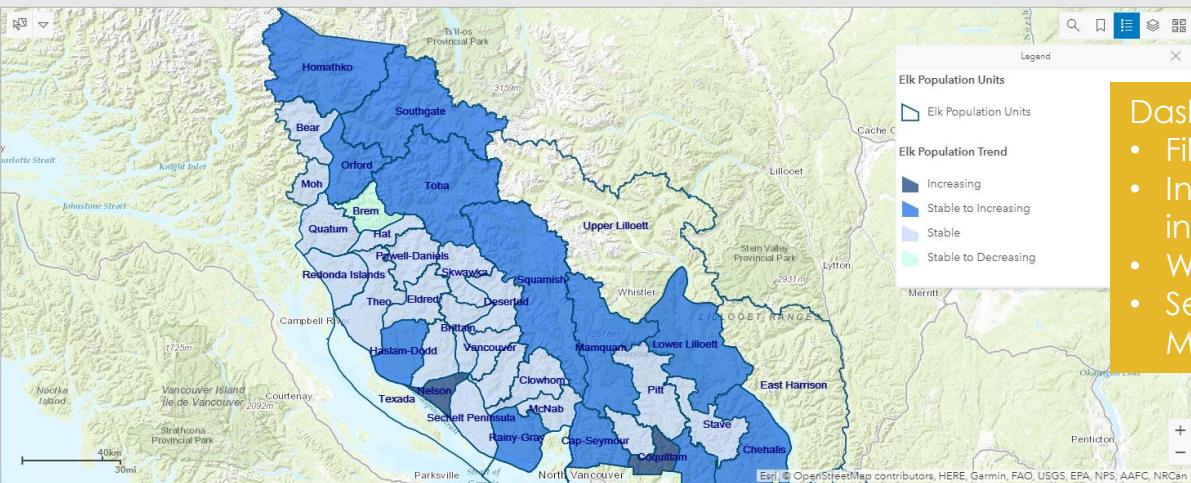
Roosevelt Elk SBOT: Key Features and Functionalities

[Draft] SBOT - Roosevelt Elk Version 1.0 Last Updated January 8, 2019 

Overview **Dashboard**

Select one or more polygons from the list below to update the charts on the tabs below the map. Names represent: EPU - Elk Population Unit

- Alouette
- Bear
- Brem
- Brittain
- Cap-Seymour
- Chehalis
- Chilliwack
- Clowhom
- Coquitlam
- Deserted
- East Harrison
- Eldred
- Greater Van
- Haslam-Dodd
- Hat
- Homathko
- Howe Sound
- Indian
- Lois
- Lower Lilloett
- Mamquam
- Manning
- McNab
- Moh
- Narrows
- Nelson
- Orford
- Pitt
- Powell-Daniels
- Quatum
- Rainy-Gray



Elk Population Units

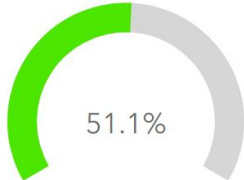
- Elk Population Units

Elk Population Trend

- Increasing
- Stable to Increasing
- Stable
- Stable to Decreasing

Population Target

Population Target 4,275



51.1%

Estimated Population Size 2,186
Est Carrying Capacity (K) 7,432

Target population is based on 60%* of carrying capacity.
* Target populations for Mamquam, Squamish, Upper Lilloett & Chilliwack
EPU's are based on 40% of carrying capacity

Population counts based on 2018 and 2019 surveys

Population **Living in Growing Season** Living in Winter Seral Stage THLB Harvest Allocation Habitat Objective

- Dashboard:**
- Filtering and selection panel by LU or multiple LUs
 - Interactive Map, includes layers list, and zoom in/out function, id tool
 - Widgets showing each indicator being measured
 - Select Howe Sound LUs (McNab, Squamish, Mamquam, CapSeymour, Rainy Gray)

Roosevelt Elk SBOT: Key Features and Functionalities

[Draft] SBOT - Roosevelt Elk
Version 1.0 Last Updated January 8, 2019

Overview Dashboard

Select one or more polygons from the list below to update the charts on the tabs below the map. Names represent: EPU - Elk Population Unit

- Coquitlam
- Deserted
- East Harrison
- Eldred
- Greater Van
- Haslam-Dodd
- Hat
- Homathko
- Howe Sound
- Indian
- Lois
- Lower Lilloet
- Mamquam
- Manning
- McNab
- Moh
- Narrows
- Nelson
- Orford
- Pitt
- Powell-Daniels
- Qutum
- Rainy-Gray
- Redonda Islands
- Sechelt Peninsula
- Skagit
- Skwawka
- Southgate
- Squamish
- Stave
- Texada
- Theo
- Toba
- Upper Lilloet
- Vancouver

Layers

- Elk Population Units
- Elk Summary
- Elk Resultant Summary
- Elk Winter Habitat Suitability - Class 1-3
- Elk Growing Season Habitat Suitability - Class 1-3
- Elk Suitability - Population Objective
- Elk Population Trend
- Harvest Allocation 2018
- EPU Habitat Objectives 2019
- Elk Winter Habitat Suitability - Class 4-6
- Elk Growing Season Habitat Suitability - Class 4-6

Population Target

Population Target 172

72.1%

Estimated Population Size 124

Est Carrying Capacity (K) 429

Target population is based on 60%* of carrying capacity.
 * Target populations for Mamquam, Squamish, Upper Lilloet & Chilliwack EPUs are based on 40% of carrying capacity

Population counts based on 2018 and 2019 surveys

Population
Living in Growing Season
Living in Winter
Seral Stage
THLB
Harvest Allocation
Habitat Objective

Roosevelt Elk SBOT: Key Features and Functionalities

[Draft] SBOT - Roosevelt Elk

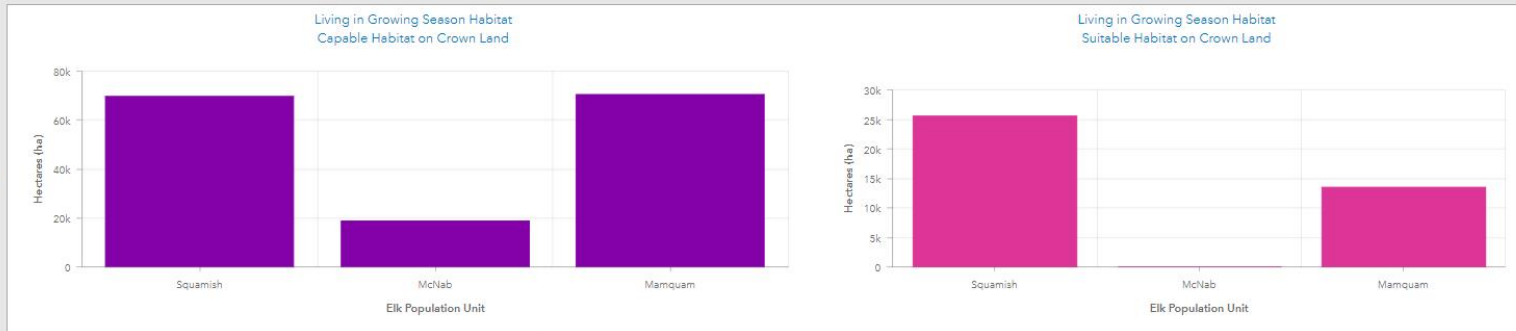
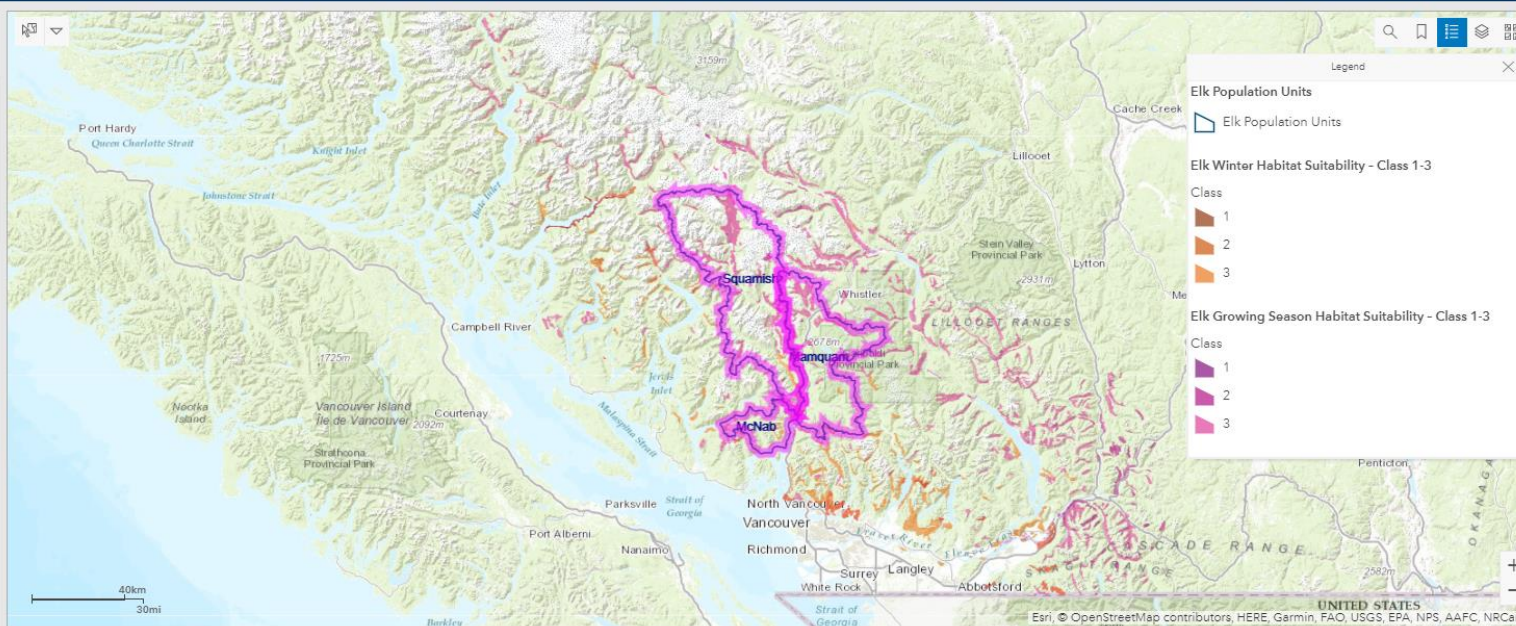
Version 1.0 Last Updated January 8, 2019



Overview Dashboard

Select one or more polygons from the list below to update the charts on the tabs below the map. Names represent: EPU - Elk Population Unit

- Coquitlam
- Deserted
- East Harrison
- Eldred
- Greater Van
- Haslam-Dodd
- Hat
- Homathko
- Howe Sound
- Indian
- Lois
- Lower Lilloett
- Mamquam
- Manning
- McNab
- Moh
- Narrows
- Nelson
- Orford
- Pitt
- Powell-Daniels
- Quatum
- Rainy-Gray
- Redonda Islands
- Sechelt Peninsula
- Skagit
- Skwawka
- Southgate
- Squamish
- Stave
- Texada
- Theo
- Toba
- Upper Lilloett
- Vancouver



Population Living in Growing Season Living in Winter Seral Stage THLB Harvest Allocation Habitat Objective

Roosevelt Elk SBOT: Key Features and Functionalities

[Draft] SBOT - Roosevelt Elk

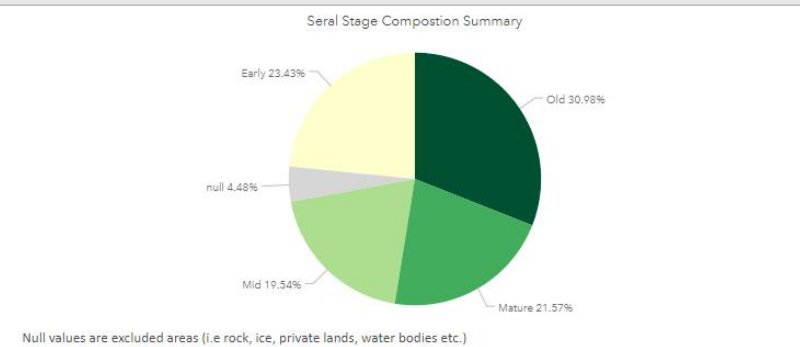
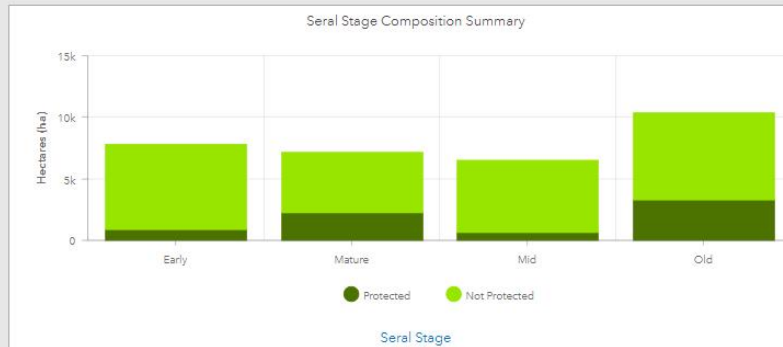
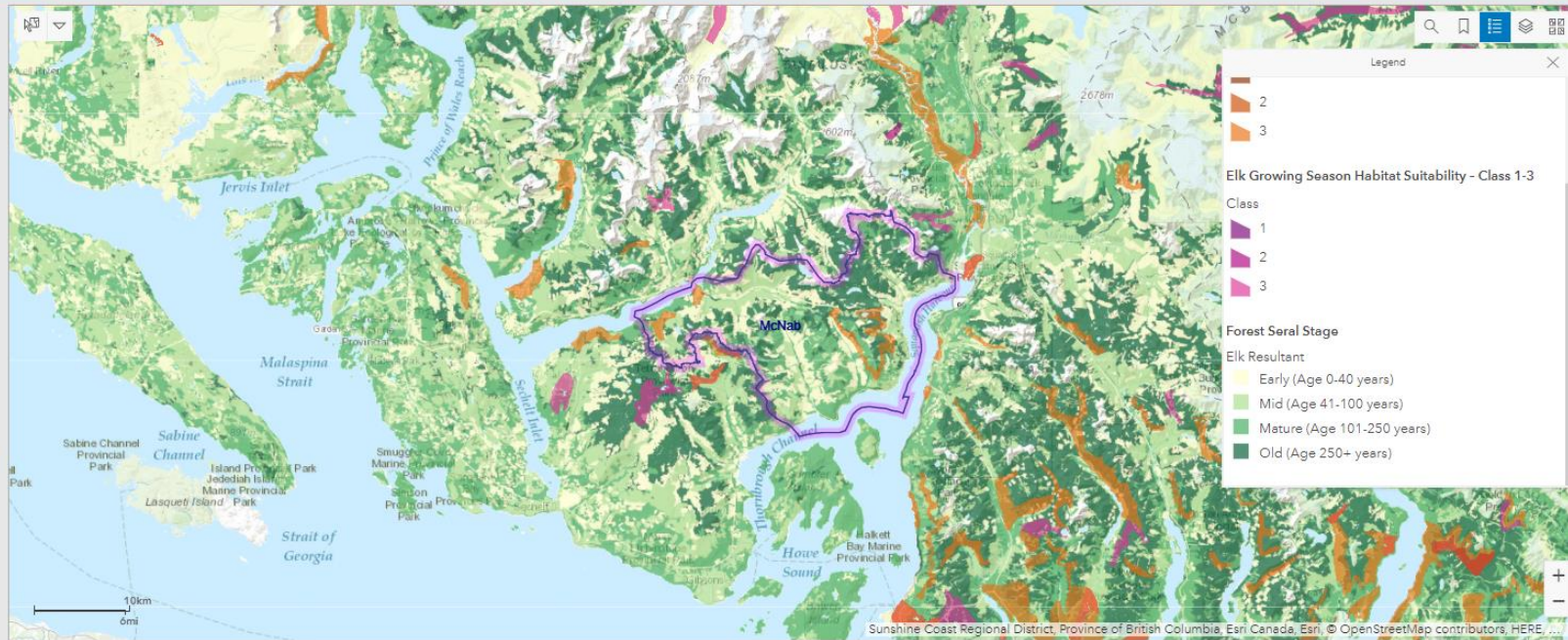
Version 1.0 Last Updated January 8, 2019



Overview Dashboard

Select one or more polygons from the list below to update the charts on the tabs below the map. Names represent: EPU - Elk Population Unit

- Coquitlam
- Deserted
- East Harrison
- Eldred
- Greater Van
- Haslam-Dodd
- Hat
- Homathko
- Howe Sound
- Indian
- Lois
- Lower Lilloett
- Mamquam
- Manning
- McNab**
- Moh
- Narrows
- Nelson
- Orford
- Pitt
- Powell-Daniels
- Quatum
- Rainy-Gray
- Redonda Islands
- Sechelt Peninsula
- Skagit
- Skwawka
- Southgate
- Squamish
- Stave
- Texada
- Theo
- Toba
- Upper Lilloett
- Vancouver



Population Living in Growing Season Living in Winter Seral Stage THLB Harvest Allocation Habitat Objective

Roosevelt Elk SBOT: Key Features and Functionalities

[Draft] SBOT - Roosevelt Elk

Version 1.0 Last Updated January 8, 2019



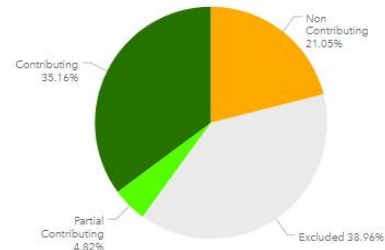
Overview Dashboard

Select one or more polygons from the list below to update the charts on the tabs below the map. Names represent: EPU - Elk Population Unit

- Alouette
- Bear
- Brem
- Brittain
- Cap-Seymour
- Chehalis
- Chilliwack
- Clowhom
- Coquitlam
- Deserted
- East Harrison
- Eldred
- Greater Van
- Haslam-Dodd
- Hat
- Homethko
- Howe Sound
- Indian
- Lois
- Lower Lilloett
- Memquam
- Manning
- McNab**
- Moh
- Narrows
- Nelson
- Orford
- Pitt
- Powell-Daniels
- Quatum
- Rainy-Gray
- Redonda Islands
- Sechelt Peninsula
- Skagit
- Skwawka



Timber Harvesting Land Base Composition Summary



Percentage Timber Harvesting Land Base by area (hectares).

* Excluded areas include Tree Farm Licences, community forests, woodlots, protected areas and private lands.

Population Living in Growing Season Living in Winter Seral Stage THLB Harvest Allocation Habitat Objective

Roosevelt Elk SBOT: Key Features and Functionalities

[Draft] SBOT - Roosevelt Elk

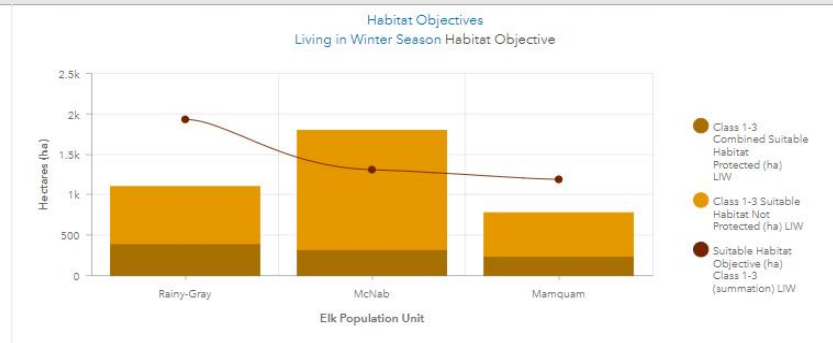
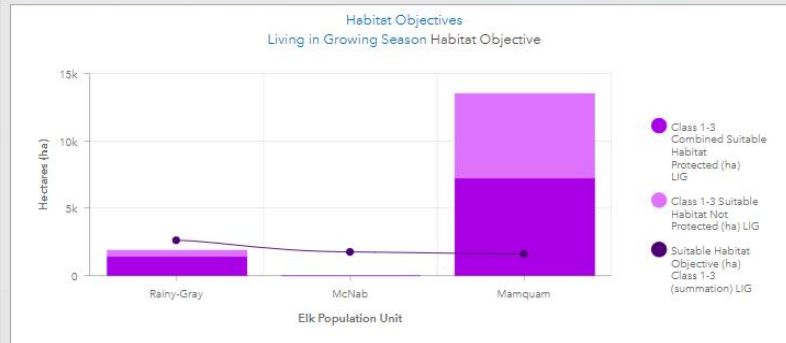
Version 1.0 Last Updated January 8, 2019



Overview Dashboard

Select one or more polygons from the list below to update the charts on the tabs below the map. Names represent: EPU - Elk Population Unit

- Cap-Seymour
- Chehalis
- Chilliwack
- Clowhom
- Coquitlam
- Deserted
- East Harrison
- Eldred
- Greater Ven
- Haslam-Dodd
- Hat
- Homathko
- Howe Sound
- Indian
- Lois
- Lower Lilloett
- Mamquam**
- Manning
- McNab**
- Moh
- Narrows
- Nelson
- Orford
- Pitt
- Powell-Daniels
- Quatum
- Rainy-Gray**
- Redonda Islands
- Secheit Peninsula
- Skagit
- Skwawka
- Southgate
- Squamish
- Stave
- Texada

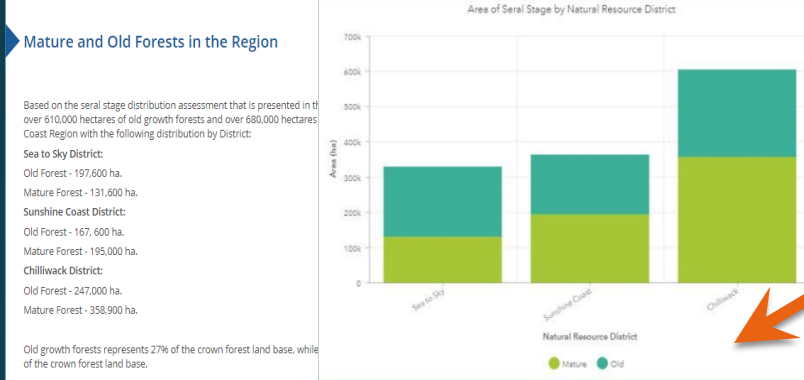


Population Living in Growing Season Living in Winter Seral Stage THLB Harvest Allocation Habitat Objective

Why Old Growth Forests SBOT

- ▶ It is the Region's response to the Provincial Cumulative Effects Framework Project
- ▶ It provides coarse status of the condition of Old Growth Forests in the Region
- ▶ Tool helps in the interpretation and guidance how the Region responds to the Strategic Review of Old Growth Management
- ▶ It is an input to Forest Values and Multi-value SBOTs

Old Growth Forests SBOT: Key Features and Functionalities



- 1) **Old and Mature Forests Objective Assessment**, identifying amount of old and mature forest in each reporting unit (Landscape Unit, BEC unit) and assessment of current protection of old and mature forests with respect to objectives/targets at BEC unit level;
 - 2) **Old and Mature Forests Protection Assessment**, identifying amount of Old and Mature forests in each reporting unit (Landscape Unit, OGMA, BEC Unit) categorized by the four levels of protection as described in the [draft Provincial Land Designations in B.C.](#)
 - 3) **OGMA by Protection** (area in ha. and as a %), identifying amount of protection in each reporting unit (Region, District, Landscape Unit, BEC Unit, Land Designation).
 - 4) **Old and Mature Forests Distribution**, identifying amount of old and mature forest in the Region, by individual District, Landscape Unit, BEC Unit, and by individual OGMA's. This provides an estimate of the presence of old and mature forests by the various assessment scales.
- Other indicator assessments not yet included in the current Old Growth SBOT, and that is outlined in the Cumulative Effect Framework's [Interim Assessment Protocol for Old Growth Forest in British Columbia](#) are:

Spatial Data Layers

Designated Lands: are spatially-defined areas established through legislation or purchased for the protection of nature and cultural values, the conservation of biological diversity and ecosystem services, and the management of natural resources. For example, conservation land designations include areas established as parks, areas identified to protect species at risk or cultural heritage, and areas that are identified to manage the balance of nature conservation and economic opportunities. More information regarding land designation is available in the Environmental Reporting BC, 2017, [Land Designations that Contribute to Conservation in B.C. State of Environment Reporting](#), Ministry of Environment and Climate Change Strategy, British Columbia, Canada. This dataset is currently being updated and expected to be available in 1-2 months. link to the Data Catalogue can be found [here](#).

Legal Old Growth Management Areas (OGMA): Legally established and spatially defined areas of old growth forest that are identified during landscape unit planning or an operational planning process. The [legal OGMA dataset](#) used in this SBOT was created in June 27, 2016 and updated February 5, 2019.

Non-Legal Old Growth Management Areas: These are spatially defined areas of old growth forest that are identified during landscape unit planning or an operational planning process. The [non-legal OGMA layer](#) used in this SBOT was created June 27, 2016 and updated February 5, 2019.

[DRAFT] SBOT - Old Growth - SMT - Main

Overview | Dashboard


- Welcome
- Mature and Old Forests in the Region
- Seral Stage Definitions
- Social, Cultural, Ecological and Economic Value
- Threats
- Objective Setting Methodology
- Assessment Units
- Linkage to Cumulative Effects Framework
- Spatial Data Layers
- Additional References



[Biodiversity Guidebook](#) (September 1995)
[Landscape Unit Plans](#) (South Coast)
[CEF Interim Assessment Protocol for Old Growth Forest in British Columbia](#) (December 2017)
[Strategic Review of Old Growth Management](#)
[Glossary](#)

Old Growth Forests SBOT: Key Features and Functionalities

Interactive Map

[DRAFT] SBOT - Old Growth - SMT - Main
No issues detected x Story not shared x Edit x A Story Map


Overview
Dashboard

Filtering Panel

Use the options below to filter the graph displays.

Select District:

All
 Chilliwack Natural Resource District
 Sea to Sky Natural Resource District
 Sunshine Coast Natural Resource District

Select Landscape Unit:

All

Select BEC Label:

All

Select Land Designation:

All

Select OGMA Type:

All Legal OGMA Proposed OGMA

Select Seral Stage:

All Early Immature Mature Old


Select Site Index:

0 70

Relevant Links:
 Provided below are quick references related to the various utilities and features of the dashboard:

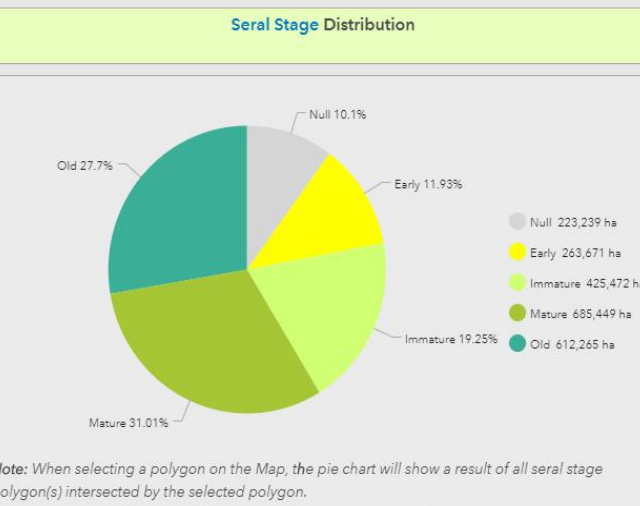
- Landscape Unit Plans
- How BEC works
- BEC Zone & Subzone Descriptions
- Site Index
- Land Designation

Land Designation Categories:
 PA= Protected Lands
 PO= Other Protected Lands
 RE= Resource Exclusion Areas
 MA= Spatially Managed Areas



Map LU Objective Status Map BEC Zone and Subzone Descriptions

Seral Stage Distribution



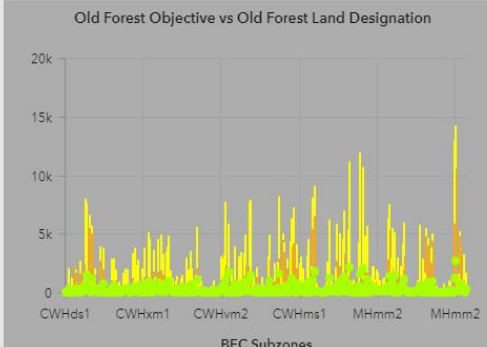
Note: When selecting a polygon on the Map, the pie chart will show a result of all seral stage polygon(s) intersected by the selected polygon.

by Selected Area by NRD by OGMA by BEC Subzones

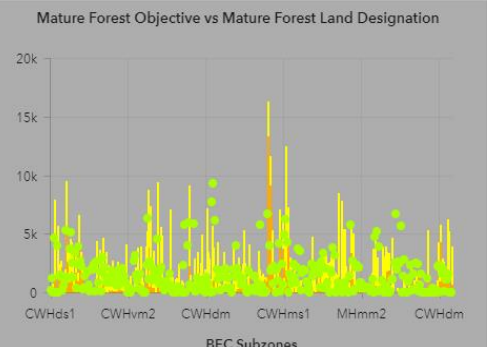
Old and Mature Forests Landscape Unit Objectives by BEC Subzones

Note: Graphs below can only be filtered by Landscape Unit Name and BEC subzones.
Graph displays are based on the Land Designations that Contribute to Conservation in B.C. (PA-Protected Lands, PO-Other Protected Lands, RE-Resource Exclusion Areas)

Old Forest Objective vs Old Forest Land Designation



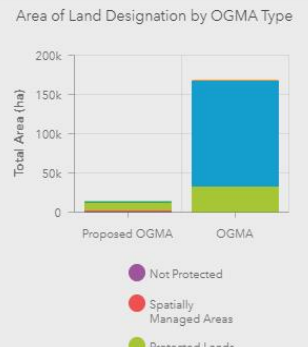
Mature Forest Objective vs Mature Forest Land Designation



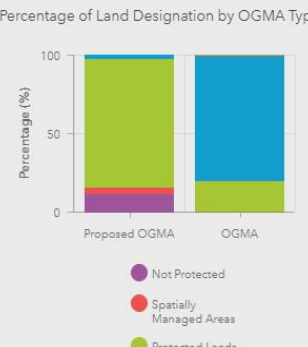
Area Objective Status - BEC Unit Count Objective Status - Landscape Unit

Land Designation

Area of Land Designation by OGMA Type



Percentage of Land Designation by OGMA Type



by Landscape Unit by OGMA by BEC Subzones

Seral Stage Distribution Graphs

Land Designation Graphs

Filtering Panel

Related Links

Landscape Unit Objectives Graphs

Old Growth Forests SBOT: Key Features and Functionalities

[DRAFT] SBOT - Old Growth - SMT - Main

Overview Dashboard

Filtering Panel

Select District:

- All
- Chilliwack Natural Resource District
- Sea to Sky Natural Resource District
- Sunshine Coast Natural Resource District

Select Landscape Unit:

Upper Lillooet

Select BEC Label:

CWtms1 Mhmm2

Select Land Designation

Pk Provincial Parks

Select OGMA or Proposed OGMA:

All Proposed OGMA

Select Seral Stage:

All Immature Mature Old

Select Site Index:

9 35

Map BEC Zone and Subzone Descriptions

Area of Land Designation by BEC

Seral Stage Distribution

Area of Land Designation by BEC

Land Designation

Old and Mature Forests Landscape Unit Objectives by BEC Subzones

Old Forest Objective vs Old Forest Protected Lands

Mature Forest Objective vs Mature Forest Protected Lands

Area of Land Designation by BEC

Relevant Links

- Landscape Unit Plans
- How BEC works
- BEC Zone & Subzone Descriptions
- Site Index
- Land Designation

FORESTS, LANDS, NATURAL RESOURCE OPERATIONS & RURAL DEVELOPMENT

NRS AGRI EMPR ENV FL

Organization, Business, Tools, Employee,

Glossary - Old Growth

Wednesday, May 6, 2020 - 10:05am

Biogeoclimatic Unit - part of the **Biogeoclimatic Ecosystem Classification System**. Recognized biogeoclimatic units are a synthesis of climate, vegetation and soil data and are defined as "classes of geographically related ecosystems that are distributed within a vegetational inferred climatic space."

Land designation - contribute to conservation and are spatially-defined areas established through legislation or purchased for the protection of nature and cultural values, the conservation of biological diversity and ecosystem services and the management of natural resources. For example, conservation land designations include areas established as parks, areas identified to protect species at risk or cultural heritage, and areas that are identified to manage the balance of nature conservation and economic opportunities.

Landscape Unit - a planning area, generally up to 100 000ha in size, delineated according to topographic or geographic features such as a watershed or series of watersheds. It is established by the district manager.

Mature Seral - forests composed primarily of co-dominant trees, with canopies that vary vertically, horizontally, or both. Generally, refers to trees 80 to 120 years old or greater, depending on species and site conditions. The age and structure of mature seral vary significantly by forest type and from one biogeoclimatic zone to another.

BRITISH COLUMBIA Environmental Reporting BC

Home / Land & Forests /

Land & Forests

Land Designations that Contribute to Conservation in B.C.

Land designations that contribute to conservation are spatially-defined areas established through legislation or purchased for the protection of nature and cultural values, the conservation of biological diversity and ecosystem services and the management of natural resources. For example, conservation land designations include areas established as parks, areas identified to protect species at risk or cultural heritage, and areas that are identified to manage the balance of nature conservation and economic opportunities. This indicator reports on the status of land designations that are intended to contribute to conservation in British Columbia.

- Land designations that contribute to conservation are summarized in three categories: **Protected Lands**, **Resource Exclusion Areas** and **Spatially Managed Areas**. The three categories span a considerable range in contribution to conservation, with variation in purpose, scope and strength—with respect to intended conservation outcomes—and length of the term of the designations. **NOTE: These categories are intended to be treated independently and the percentages of area designated should not be summed across categories.**
- Protected Lands**—covering 15.4% of British Columbia—includes all **Parks & Protected Areas** (15.0%) and **Other Protected Lands** (0.4%) with the **primary purpose** of the **long-term** conservation of nature and cultural values.
- Resource Exclusion Areas**—covering 12.4% of B.C.—includes all designations that fully exclude one or two resource activities for the purpose of conservation.
- Spatially Managed Areas**—currently covering 24.5% of B.C.—includes spatial designations managing development or a resource activity for the purpose of conservation—but where conservation is not the sole or primary objective—and resource activity is still allowed to occur. The designations within this category vary significantly in purpose and scope of management.
- More detail on the land designations that contribute to conservation and the three categories are provided below.

Summary of Land Designations that Contribute to Conservation in B.C. (2017)

Protected Lands in British Columbia

15.4% of lands in B.C. are protected through legally established areas designated for the primary purpose of the long-term conservation of nature and cultural values.

Learn more about Protected Lands & Waters in B.C.

Research Branch

Biogeoclimatic Ecosystem Classification Program

Research Branch > Sections > BEC > Products & Resources > Ecosystem Classifications > Zone and Subzone Descriptions

Zone and Subzone Descriptions

Click on a BGC zone, or a subzone/variant/phase, to view relevant information from the Land Management Handbook series of field guides on site identification and interpretation of forest ecosystems.

BGC Zone	Subzone/variant/phase	Description
AT	un	Undifferentiated
RAFA	unp	Undifferentiated and Parkland
BG	yh1	Chanagan Very Dry Hot
	yh2	Thompson Very Dry Hot
	yh3	Fraser Very Dry Hot
	xw1	Nicola Very Dry Warm
	xw2	Alkali Very Dry Warm
Ld	dk2	Liard Dry Cool
	mu1	Peace Moist Warm
	mu2	Fort Nelson Moist Warm
	un	Undifferentiated
BVBS	ys	Very Wet Cool
	ys1	Murray Wet Cool
	ys2	Graham Wet Cool

B.C. has declared a state of emergency. Learn about COVID-19 health issues. | B.C.'s response to COVID-19.

BRITISH COLUMBIA

Home > Farming, Natural Resources & Industry > Crown Land & Water > Land Use Planning > Land Use Plans & Legal Direction By Region >

South Coast Region Land Use Plans

The following land use plans provide resource management direction for Provincial public land within the South Coast Natural Resource Region.

Modernizing Land Use Planning

Active Projects

Policy & Guidance

- Land Use Plans & Legal Direction By Region
- Cariboo
- Kootenay-Boundary
- Northeast
- Omineca
- Skeena
- South Coast

Sea to Sky LRM

Chilliwack Landscape Unit Plans

Sea to Sky Landscape Unit Plans

Sunshine Coast Landscape Unit Plans

Sub-Regional Land Use Plan

- Sea to Sky Land & Resource Management Plan

Landscape Unit Plans

- Chilliwack Landscape Unit Plans
- Sea to Sky Landscape Unit Plans
- Sunshine Coast Landscape Unit Plans

Old Growth Forests SBOT: Key Features and Functionalities

[DRAFT] SBOT - Old Growth Forests- SMT - Main

No issues detected x Story not shared x Edit x A Story Map f t l BRITISH COLUMBIA

Overview Dashboard

Filtering Panel

Use the options below to filter the graph displays.

Select District:

- All
- Chilliwack Natural Resource District
- Sea to Sky Natural Resource District
- Sunshine Coast Natural Resource District

Select Landscape Unit:

Memquam

Select BEC Unit:

All

Select Land Designation

All

Select OGMA Type:

All Legal OGMA

Select Seral Stage:

All Early Immature Mature Old

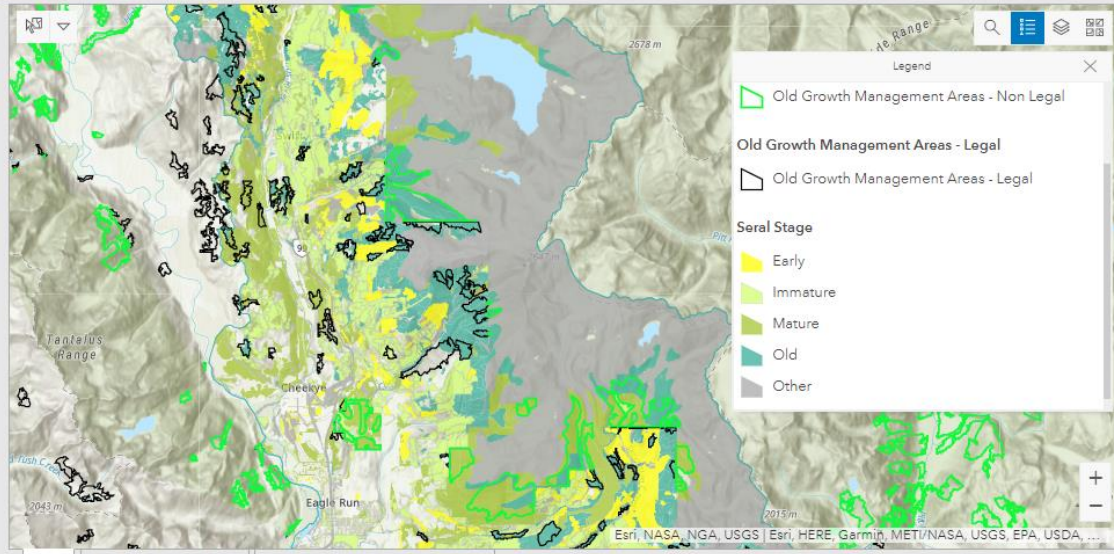
Select Site Index:



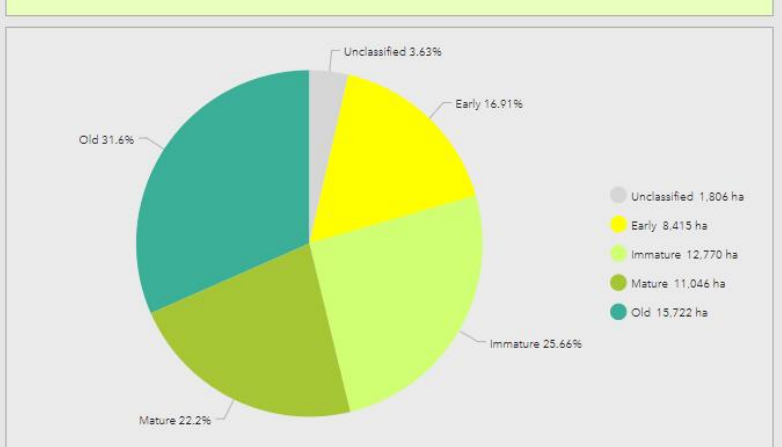
Relevant Links:
Provided below are quick references related to the various utilities and features of the dashboard:

- Landscape Unit Plans
- How BEC works
- BEC Zone & Subzone Descriptions
- Site Index
- Land Designation

Land Designation Categories:
PA= Protected Lands
PO= Other Protected Lands
RE= Resource Exclusion Areas
MA= Spatially Managed Areas



Seral Stage Distribution

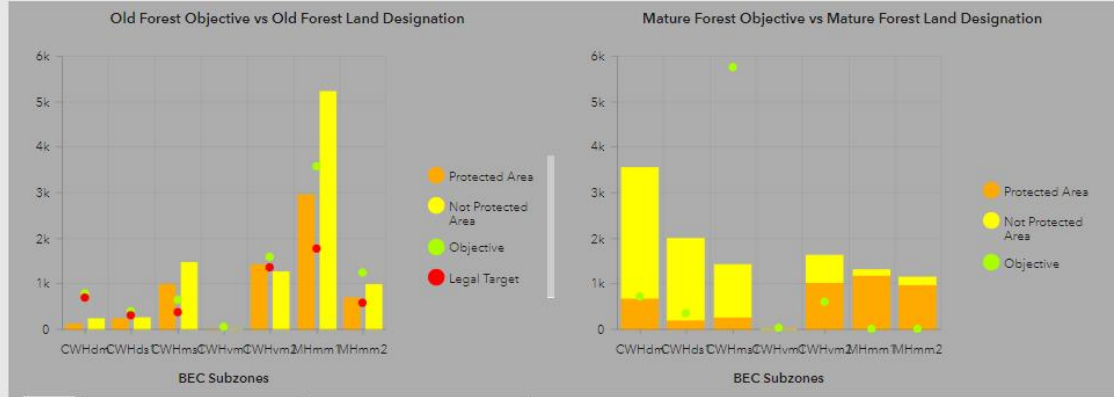


Note: When selecting a polygon on the Map, the pie chart will show a result of all seral stage polygon(s) intersected by the selected polygon.

by Selected Area by NRD by OGMA by BEC Subzones

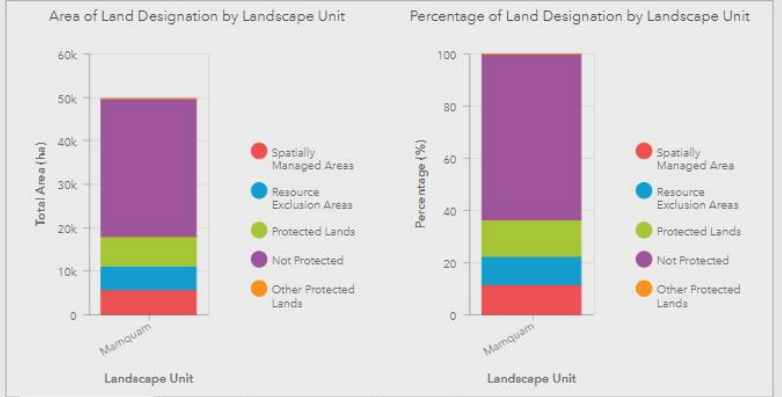
Old and Mature Forests Landscape Unit Objectives by BEC Subzones

Note: Graphs below can only be filtered by Landscape Unit Name and BEC subzones. Graph displays are based on the Land Designations that Contribute to Conservation in B.C. (PA-Protected Lands, PO-Other Protected Lands, RE-Resource Exclusion Areas)



Area Objective Status - BEC Unit Count Objective Status - Landscape Unit

Land Designation



by Landscape Unit by OGMA by BEC Subzones by THLB

Old Growth Forests SBOT: Key Features and Functionalities

[DRAFT] SBOT - Old Growth Forests- SMT - Main

No issues detected × Story not shared × Edit × A Story Map

Overview Dashboard

Filtering Panel

Use the options below to filter the graph displays.

Select District:

- All
- Chilliwack Natural Resource District
- Sea to Sky Natural Resource District
- Sunshine Coast Natural Resource District

Select Landscape Unit:

Mamquam

Select BEC Unit:

CWHms1

Select Land Designation:

All

Select OGMA Type:

All Legal OGMA

Select Seral Stage:

All Early Immature Mature Old

Select Site Index:



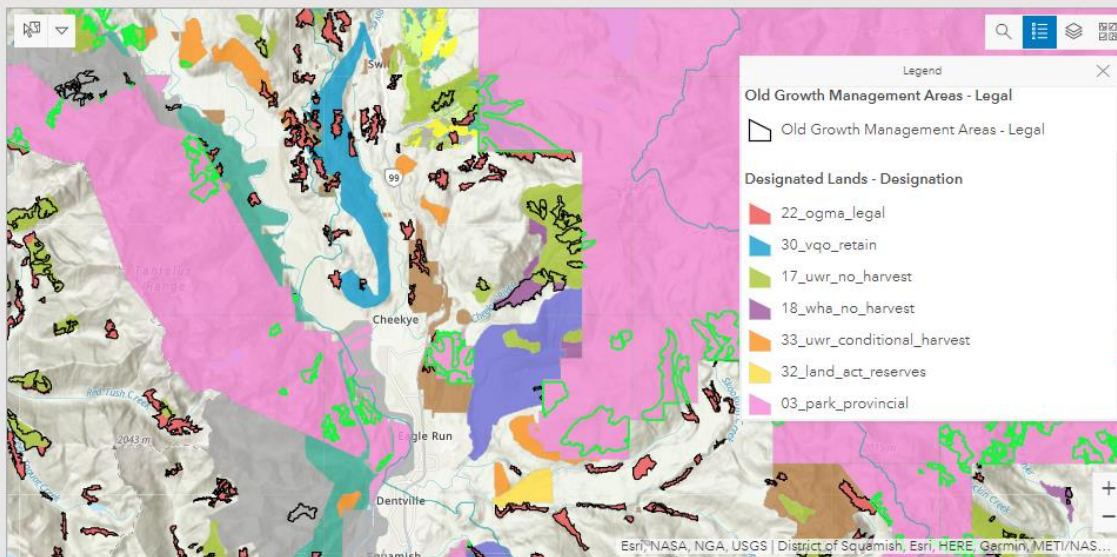
Relevant Links:

Provided below are quick references related to the various utilities and features of the dashboard:

- [Landscape Unit Plans](#)
- [How BEC works](#)
- [BEC Zone & Subzone Descriptions](#)
- [Site Index](#)
- [Land Designation](#)

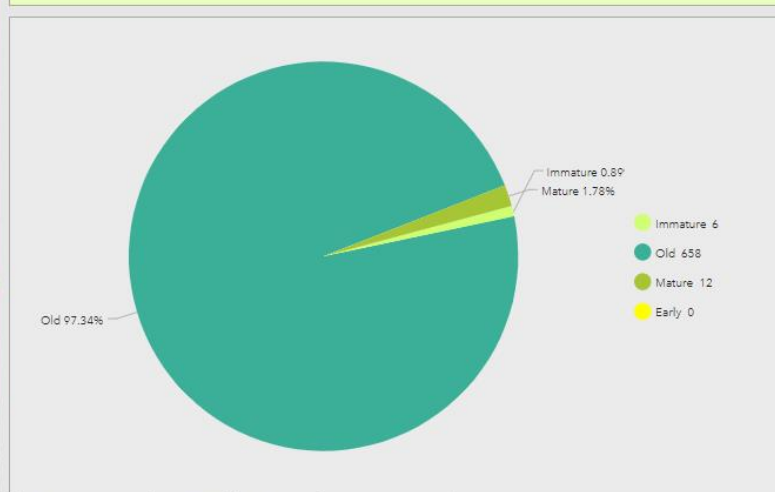
Land Designation Categories:

- PA=Protected Lands
- PO= Other Protected Lands
- RE= Resource Exclusion Areas
- MA= Specially Managed Areas



Map LU Objective Status Map BEC Zone and Subzone Descriptions

Seral Stage Distribution



by Selected Area by NRD by OGMA by BEC Subzones

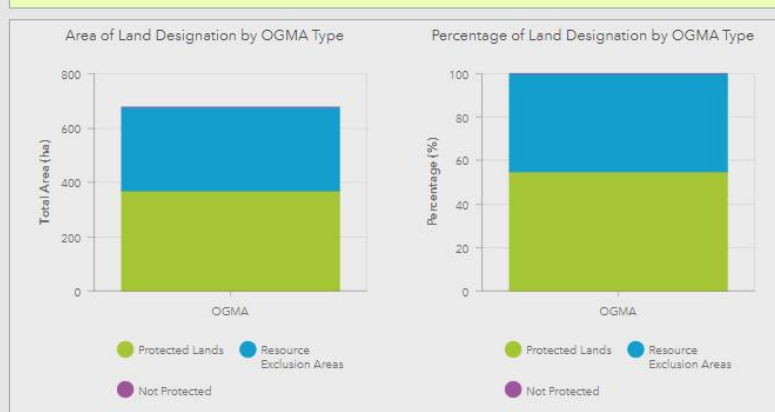
Old and Mature Forests Landscape Unit Objectives by BEC Subzones

Note: Graphs below can only be filtered by Landscape Unit Name and BEC subzones.
Graph displays are based on the Land Designations that Contribute to Conservation in B.C. (PA-Protected Lands, PO-Other Protected Lands, RE-Resource Exclusion Areas)



Area Objective Status - BEC Unit Count Objective Status - Landscape Unit

Land Designation



by Landscape Unit by OGMA by BEC Subzones by THLB