



# Central Estuary Brownfield Restoration Project

Presentation by:

Edith B. Tobe, RPBio

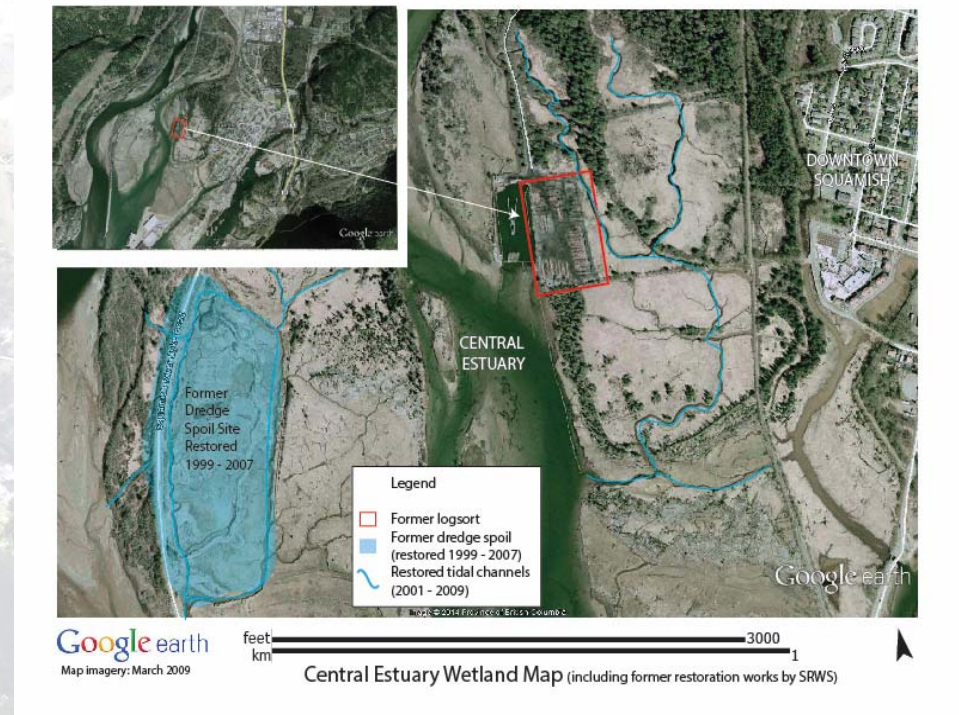
Squamish River Watershed Society

Friday, October 16, 2015

[www.squamishwatershed.com](http://www.squamishwatershed.com)

# Project Location & Background

- Located in the Central Estuary
- Focus to restore the former log-sort of over 50 years) back into functional estuarine habitat
- Re-establish tidal channels
- Daylight culverts
- Deactivate access road
- Construct connector trail & information signage



# Community Support

- Several planting days with volunteer support in March and September
- Re-establishing native riparian vegetation
- Good support from the community and excitement at seeing the area literally growing before their eyes!



# Construction Methods

- Site initially surveyed to establish locations for new tidal channels, trails, and identify elevations
- Excavators used to remove overburden material and trucks loaded to move soil around to infill log-dump pond



# Additional Works

- Soil sampling to establish baseline data
- Blue Carbon Protocol
- Monitoring Plan developed to identify changes over time
- Open Classroom Experiential Learning for students
- 3.5 Hectares of new habitat for wildlife and migratory birds



An aerial photograph of a river valley. A large dam is visible in the middle ground, with a reservoir behind it. The river flows through a valley with steep, forested hills on either side. The foreground shows a dense forest of evergreen trees. The sky is clear and blue.

# Partnership & Support

- Ministry of Forests, Lands, and Natural Resource Operations
- Fisheries and Oceans Canada
- Squamish Nation
- District of Squamish
- Environment Canada
- BC Institute of Technology Ecological Restoration Program
- Quest University

An aerial photograph of a river valley. A large dam is visible in the middle ground, with a reservoir behind it. The surrounding landscape is a mix of green forest and cleared areas. The image is overlaid with a semi-transparent white box containing text.

# Funding & Support

- National Wetland Conservation Fund
- Recreational Fisheries Conservation Partnership Program
- Pacific Salmon Foundation
- CN Cheakamus Ecosystem Recovery Fund
- BC Hydro Fish and Wildlife Conservation Program
- Habitat Conservation Trust Fund
- Fish Habitat Restoration Initiative







March 2015



September 2015





Thank You!

Edith B. Tobe, RPBio  
Executive Director

**Squamish River Watershed Society**

Box 1791

Squamish, BC

V8B 0B3

604-898-9171

[srws@shaw.ca](mailto:srws@shaw.ca)

[www.squamishwatershed.com](http://www.squamishwatershed.com)