



**BRITISH
COLUMBIA**
The Best Place on Earth



A quick introduction to the Cumulative Effects Framework for BC

To the Howe Sound Community Forum

January 14, 2014

Leah Malkinson, CEF Project Manager

Ministry of Forests, Lands, and Natural Resource Operations

Outline



1. What is the Cumulative Effects Framework?
2. What are the outputs?
- *demonstration project examples*
3. How will it be implemented in the Province?
4. Some questions about Howe Sound



Defining Cumulative Effects

“Changes to environmental, social, and economic values caused by the combined effect of past, present, and reasonably foreseeable future actions or events”

- Increasing diversification of activities land base
- CE assessment by project or sector
- Inconsistent approaches across sectors



unintended cumulative effects



The Cumulative Effects Framework



What It Is

- A **strategic approach** to assessing and managing cumulative effects
- **Periodic CEA** over broad areas
- **Open information** on the condition and trend of key values
- **Decision-support tools**
- Consistent **policy and procedures**

What it Isn't

- A tool that ***makes*** decisions
- Land Use Planning
- **Thresholds** to automatically limit development

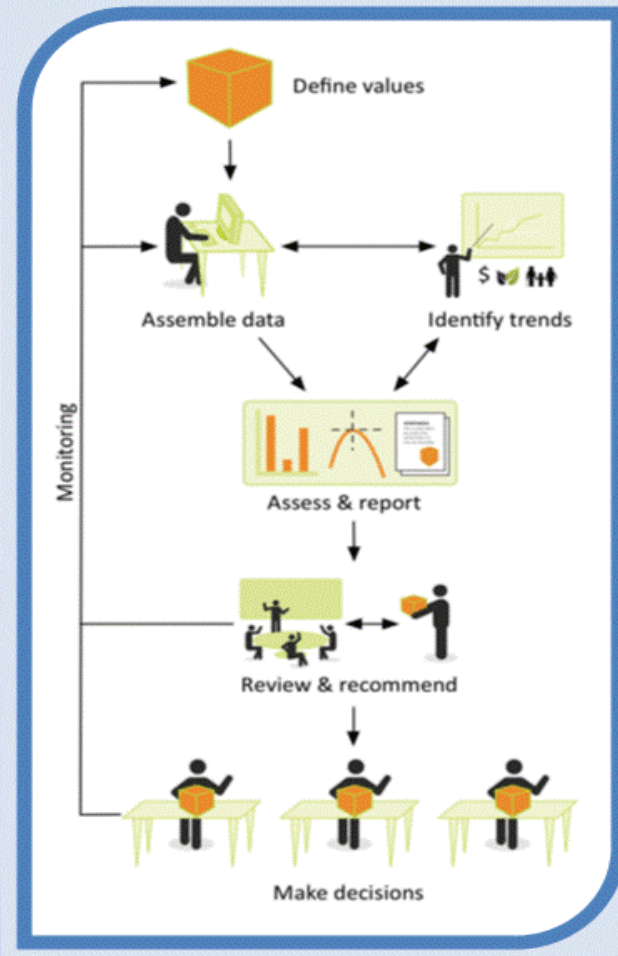
The Cumulative Effects Framework

Core Elements & Process

Values & Objectives

CE Assessment

Decision Support



Enabling Elements

First Nations & Stakeholder Engagement

Research & Monitoring

Legislation & Policy

Initial Values

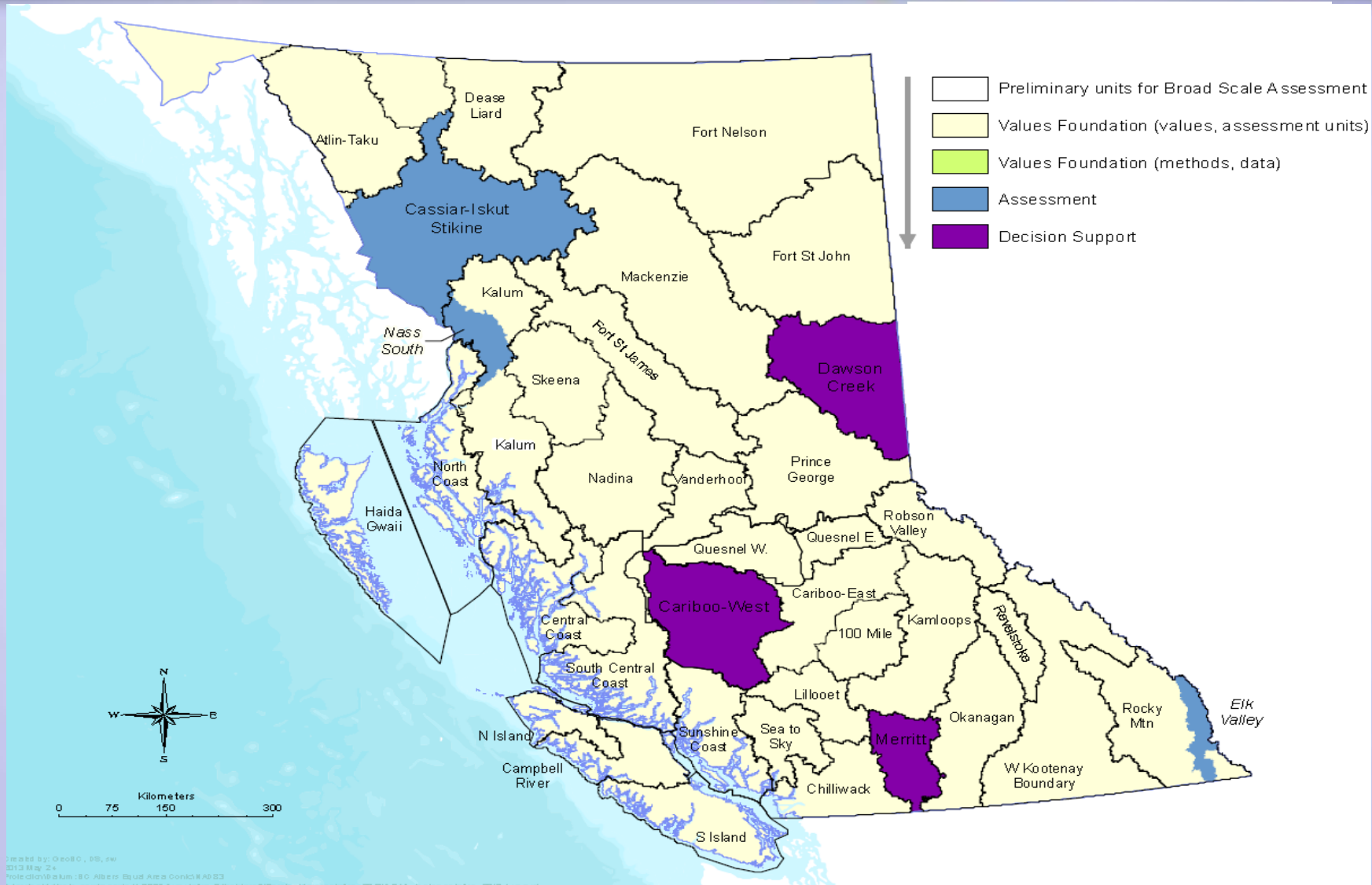
Criteria for Selection

- Existing Objectives (Legal & Policy)
- Support for Aboriginal/Treaty Right
- Coarse filter/represents nested values
- Spatially mappable
- Available data

Initial Values

- Forest Biodiversity (old & mature seral)
- Riparian Condition
- Water Quantity and Quality
- Air Quality
- Priority Fish and Wildlife Species (e.g. caribou, mule deer, moose, marten, grizzly bear)
- Cultural Heritage
- Visual Quality
- Resource Capability (e.g. timber)
- Economic Wellbeing
- Social Wellbeing

Broad Scale CE Assessment

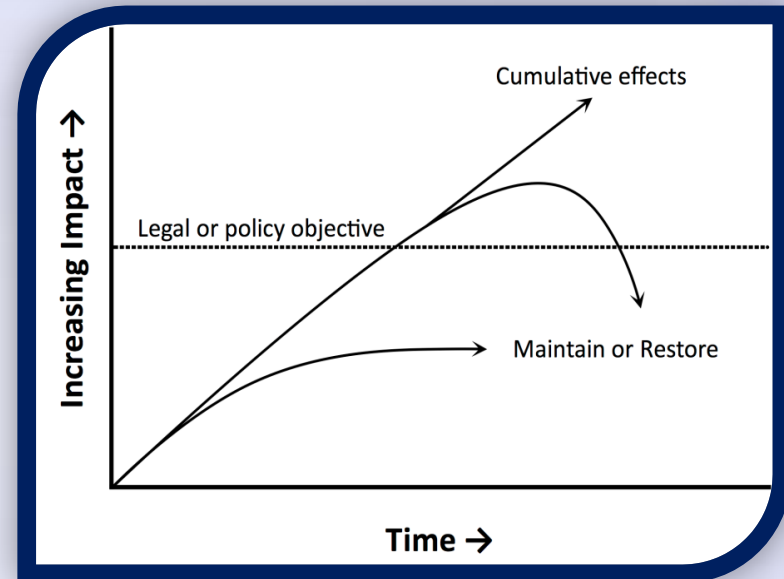


Broad Scale CE Assessment

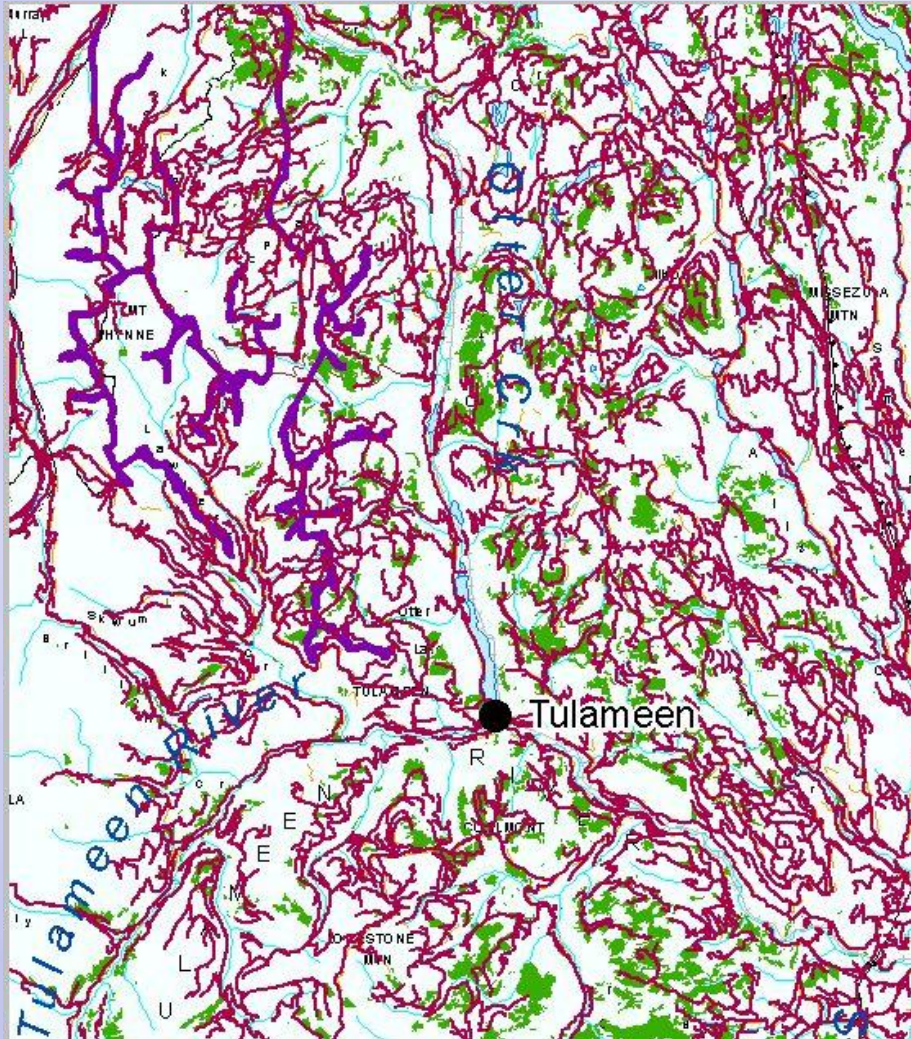
- Assessment relative to existing **objectives** for values

Assessment of:




- **Current condition**
- **Potential future condition**
 - foreseeable future (5-10 years)
 - long-term scenarios (50-100 years) – as needed



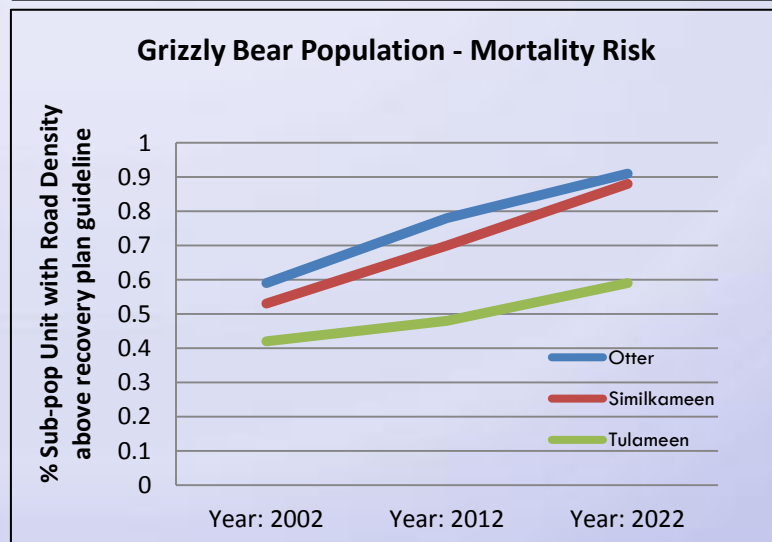
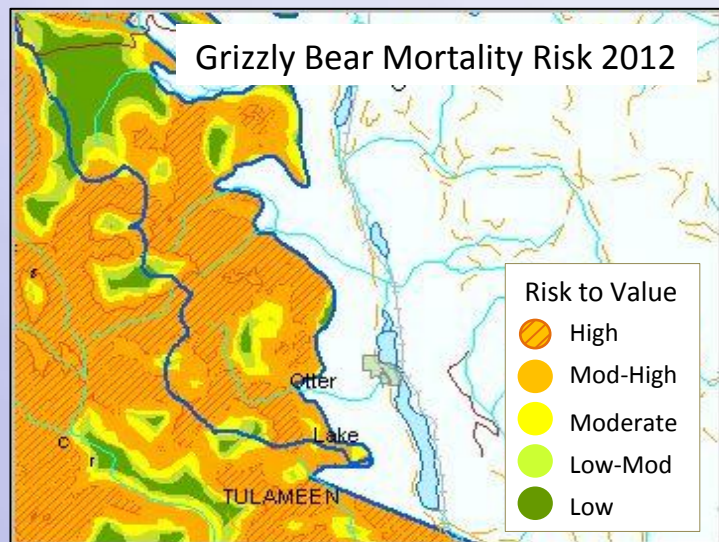
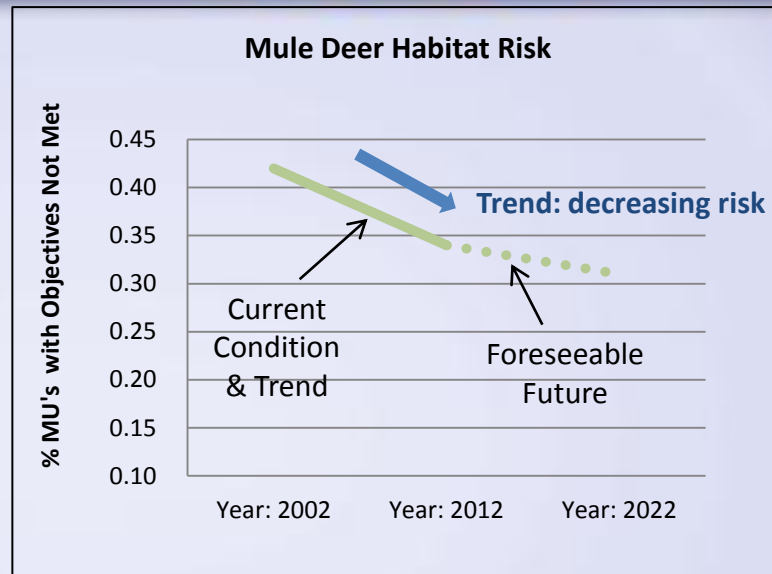
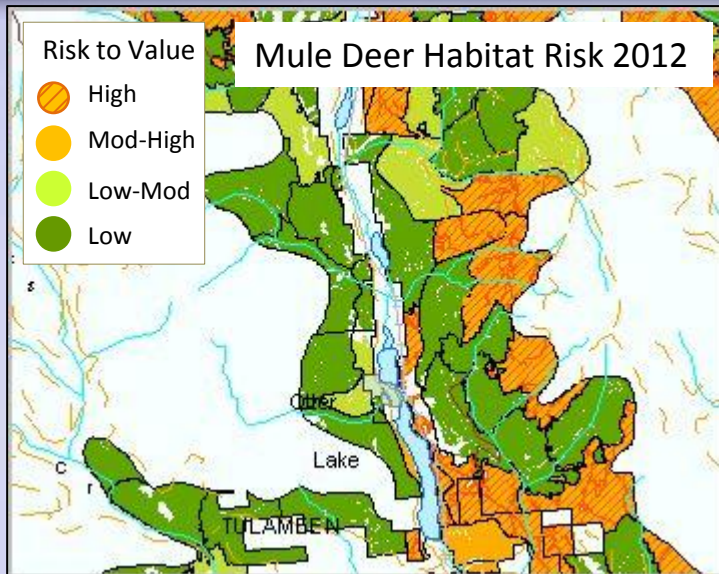
CE Assessment: Potential Future Condition



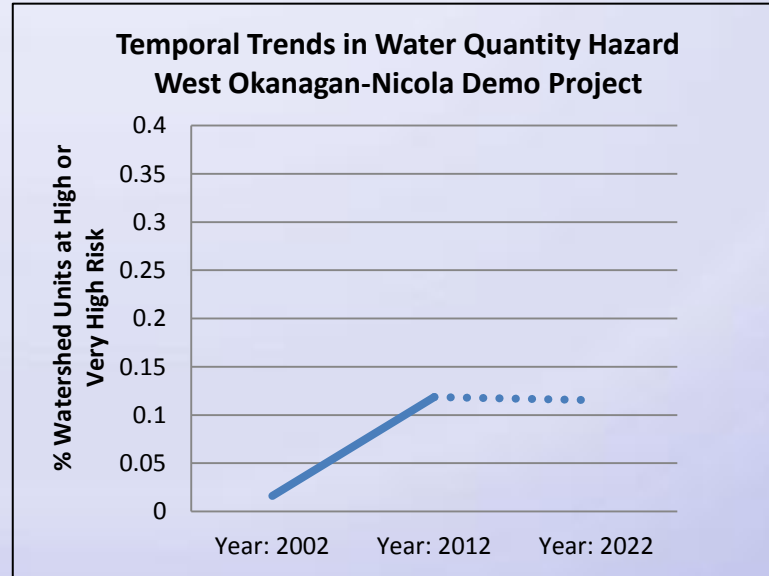
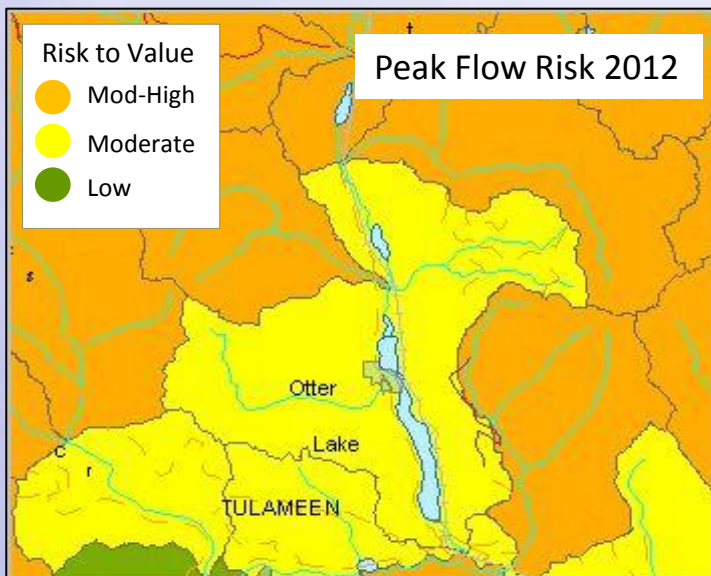
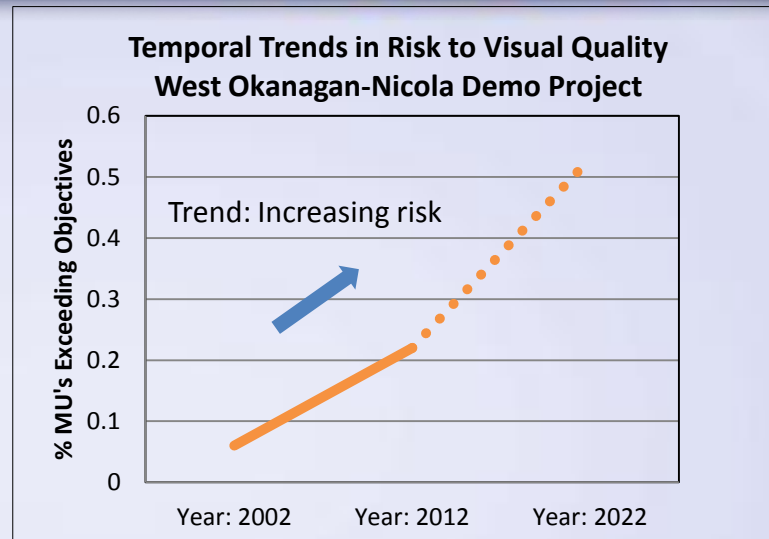
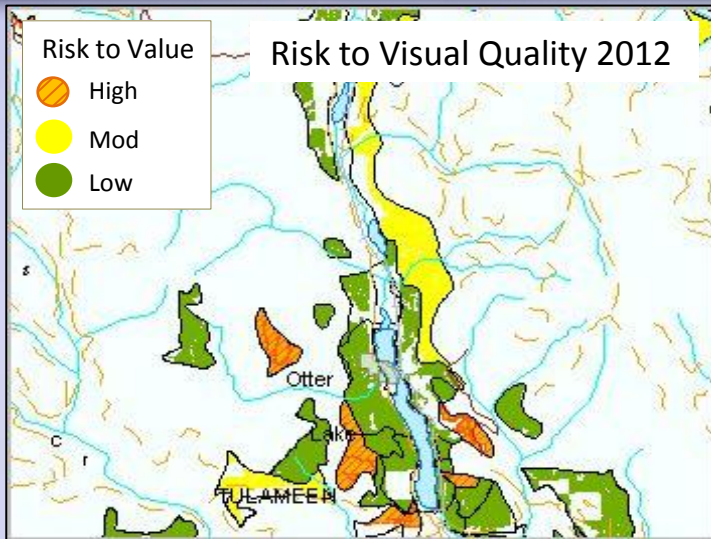
What are the cumulative effects of all foreseeable activities in the area?

-  Clean energy – wind power
-  Forestry
-  Roads to access development

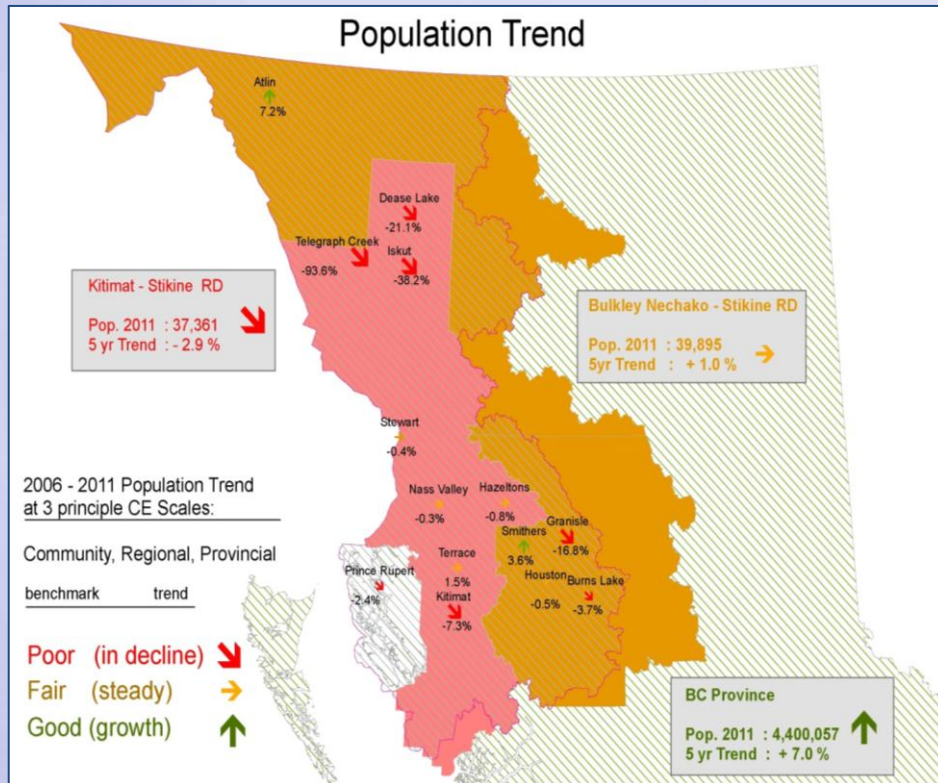
Merritt Example: Risk Mapping & Trends



Merritt Example: Risk Mapping & Trends



North-West Example: Socio-Economic Values



Social Wellbeing

- Population - Change & Composition
- Education Attainment
- Employment
- Family Income
- Housing
- Community Participation
- Community Social-Ecological Economy

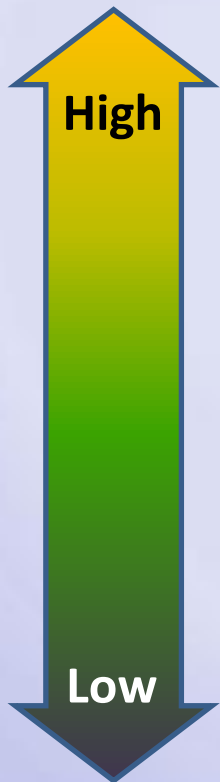
Economic Wellbeing

- Employment
- Labour Demand
- Labour Supply
- Economic Diversity
- Revenue to Crown
- Financial Capital
- Infrastructure Capital

From Assessment to Management



**Risk to Value /
Meeting Objectives**



**Management
Approach**



**Possible Management /
Mitigative Actions**

- Strategic direction
 - New / revised objectives
 - Strategic planning
- Common permit conditions
- Mitigation Plan
- Research/ inventory
- Apply best practices / Streamline decision-making

Contact



Cumulative Effects Framework

Assessing and Managing Cumulative Effects in British Columbia

Email: CumulativeEffects@gov.bc.ca

Leah Malkinson, Project Manager, MFLNRO

Leah.Malkinson@gov.bc.ca

Kai Elmauer, Project Coordinator, MFLNRO

Kai.Elmauer@gov.bc.ca