



Howe Sound Community Forum

April 29, 2016

Principles For Cooperation

Howe Sound Community Forum

To provide an overview of the need, purpose and structure for cooperative efforts by interested local governments and First Nations in the Howe Sound area.

1. Statement of Purpose

To provide a forum for local governments, Regional Districts and First Nations discussion to maintain and enhance the economic, environmental, cultural and social well being of the Howe Sound for the benefit of present and future generations.



Howe Sound Community Forum

April 29, 2016

Agenda

Welcome & Introductions

Community Updates

Provincial & Federal update

Way forward for Squamish Nation Marine Planning

Coastal Ocean Health in Howe Sound

Camp Fircom, Past, Present and future

Lunch 12:00 – 1:00

Future developments in the region

Cumulative Effects Assessment update

Town of Gibsons – Eco-Asset Strategy

Islands Trust Advocacy Projects

Closing remarks

Camp Tour 2:00

Departure 2:45

October 2015

COMMUNITY UPDATES

- GIBSONS**
 - HOME SOUND PULP AND PAPER
 - GEORGE HOTEL
 - ECO ASSETS PLAN
 - PUBLIC MARKET
- SUNSHINE COAST (REGIONAL DISTRICT)**
 - DROUGHT
 - FERRY WAITS
- BOWAN ISLAND**
 - LOO (DERELICT VESSELS)
 - MARINE PLANS
- GAMBIER ISLAND**
 - FERRY ISSUE
 - RIPARIAN
 - PARTNERSHIPS
- WEST VANCOUVER**
 - WASTE WATER TREATMENT
- SQUAMISH NATION**
 - FOREST FIRES & SOIL EROSION
 - PARTNERSHIPS
 - TRADITIONAL PLACE NAMES
- SQUAMISH**
 - REGIONAL PARTNERSHIPS
 - TRANSPORTATION
 - LNG
 - ESTUARY RECLAMATION
 - TOURISM DEVELOPMENT
- LIONS BAY**
 - WATER SHORTAGE
 - BUDGET
 - DISTRICT BOUNDARIES
- PROVINCE OF B.C.**
 - CARBON ENGINEERING
 - GEO TECH INFORMATION
 - COMMUNICATION
 - FOREST FIRES
 - TRANSPORTATION

HOWE SOUND COMMUNITY FORUM

OCTOBER 16, 2015

HOWE SOUND PULP AND PAPER

- NEWSPRINT MILL CLOSURE
- POWER PRODUCTION HAS INCREASED
- IMPROVEMENTS IN PRODUCT QUALITY

GEORGE HOTEL AND RESIDENCES

- AQUIFER PROTECTION
- PUBLIC ACCESS TO THE WATER FRONT
- PUBLIC PLANNING
- COUNCIL WORKING TOGETHER



SQUAMISH TERMINALS

SQUAMISH OCEAN FRONT DEVELOPMENT

- URBAN DEVELOPMENT AND ENVIRONMENTAL ENHANCEMENT
- SITE RECLAMATION
- COMMUNITY VOICE
- COMMUNITY IDENTITY
- GREEN TECH HUB
- CONTRIBUTION TO COMMUNITY
- PUBLIC ACCESS

SOUTH BRITANNIA

- WORKING WITH FIRST NATIONS
- IMPORTANCE OF HISTORY
- SATELLITE TO SQUAMISH
- BUILD ON COMMUNITY ASSETS
- DIFFERENT TYPES OF HOUSING
- WILL SUPPORT RIPARIAN

CONSIDERATIONS

- WHAT CAN THE LAND HANDLE?
- HOW IMPROVE HIGHWAY 99?
- HOW DOES BRITANNIA FIT INTO THE CORRIDOR?



SEWELL'S MARINA

- PEOPLE AND PROCESS
- FAMILY HISTORY OF THE AREA
- DIVERSITY
- REDUCE CARBON
- CONSULTATION, REVIEW AND REPORT

COMMERCIAL AND RESIDENTIAL DEVELOPMENT

INFORMATION SHARING

STATE OF THE SOUND

DAVID SUZUKI FOUNDATION, VANCOUVER AQUARIUM & SQUAMISH NATION



SUSTAINABLE SHIPPING

CLEAR SEAS SOCIETY

- PROVIDE INFORMATION THAT IS:
 - CREDIBLE
 - INDEPENDENT
 - FACT BASED

MARINE ACTION STRATEGY

DISTRICT OF SQUAMISH

- IDENTIFY ISSUES
- IDENTIFY A PLATFORM FOR LEADERSHIP
- PRIORITIZE
- IMPLEMENT ACTIONS

CUMULATIVE EFFECTS PROJECT

MINISTRY OF LANDS, FORESTS, NATURAL RESOURCE OPERATION

PROCESS

- DETERMINE MOST IMPORTANT SOCIAL, ECONOMIC + ENVIRONMENTAL VALUES
- CONDUCT ASSESSMENTS (BASED ON VALUES)
- SHARE INFORMATION WITH DECISION MAKERS



SQUAMISH ESTUARY RESTORATION

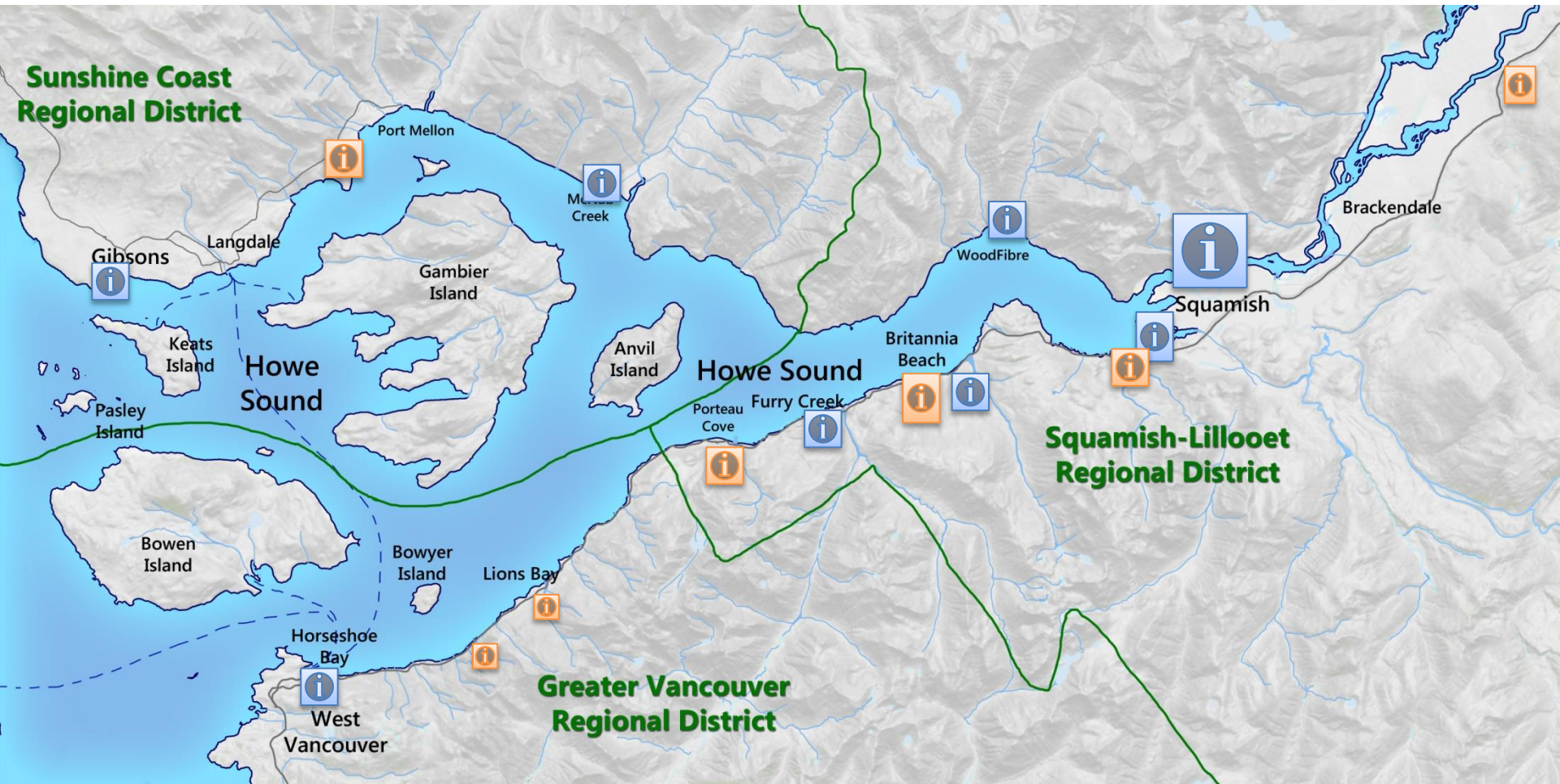
SQUAMISH RIVER WATERSHED SOCIETY

- ALL AREA WATERSHEDS DRAIN INTO HOWE SOUND
- YEARS OF DATA + INFORMATION GATHERING
- PLANTED 300 TREES + SHRUBS
- SUCCESS BECAUSE OF STRONG PARTNERSHIP



ERIN '15

New Developments



Orange = Development application not submitted.

Name	Type of Development	Dwelling Units	Location
Sewell's Marina	Comprehensive	171	West Van/GVRD
N/A	Residential	32	GVRD - Between Lions Bay and Ocean Point
N/A	Residential	16	GVRD Between District of West Vancouver and Strachan Point
Furry Creek Community	Under Dev. Covenant	800+	Furry Creek/SLRD
Porteau Cove Community	Comprehensive	1,400	Porteau Cove/SLRD
Britannia Beach South	Mixed Residential	1,000	Britannia Beach/SLRD
Britannia Beach North	Mixed Use	Under negotiation	Britannia Beach/SLRD
Klahanie Resort	Hotel/Residential	42 +	Shannon Falls/Squamish
Squamish Oceanfront Dev.	Comprehensive	?	Squamish

Name	Type of Development	Dwelling Units	Location
Waste to Energy Facility	Industrial	N/A	Port Mellon
Burnco Gravel Mine	Industrial	N/A	McNab, West Howe Sound
Woodfibre LNG	Industrial	N/A	Squamish
The George Hotel and Residences	Hotel/Residential	35 + 100 hotel units	Gibsons
Garibaldi at Squamish	Resort/recreational/residential	5,723 + 1,700 hotel units	North of Brackendale
Seaglass	Residential/commercial	12	Gibsons
47 various applications	All types	2,520	District of Squamish
Bayview Terrace	Residential	18	Gibsons
Renaissance Project - Blackcomb	Recreational/residential/resort	55 + hotel units	Whistler
	Total	11,812 + hotel units	

Expected Population Growth*

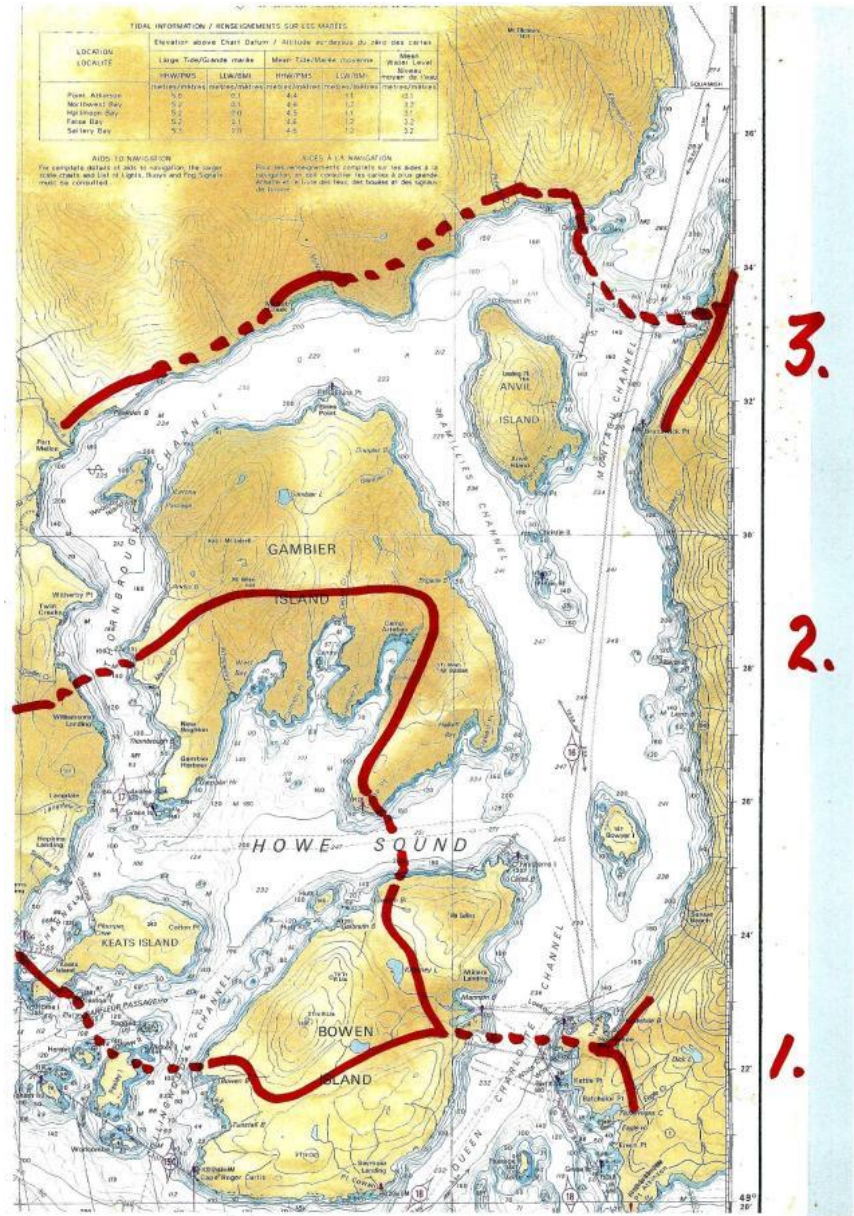
	2031 projected increase	2011 Census	% increase
Sunshine Coast	11,382	28,619	40%
Squamish Lillooet	33,012	38,000	87%
Greater Vancouver	796,000	2,476,145	32%
Total	868,959	2,542,764	34%
		Tourism growth?	

References: [SCRD - Comprehensive Regional Water Plan](#). [SLRD Regional Growth Strategy](#) (the period from 2003 to 2031: from 35,141 residents to 68,153 residents . [Metro Vancouver Regional Growth Strategy](#): 2031 over 2011.

E.&O.E.

Fixed Link Study

What can the Howe Sound Community Forum members do to manage growth in a sustainable manner for future generations?



Source: Sunshine Coast Connector website