

# Natural Capital in Howe Sound

Key Findings  
Howe Sound Community Forum  
October 2014



David  
Suzuki  
Foundation

[www.davidsuzuki.org](http://www.davidsuzuki.org)



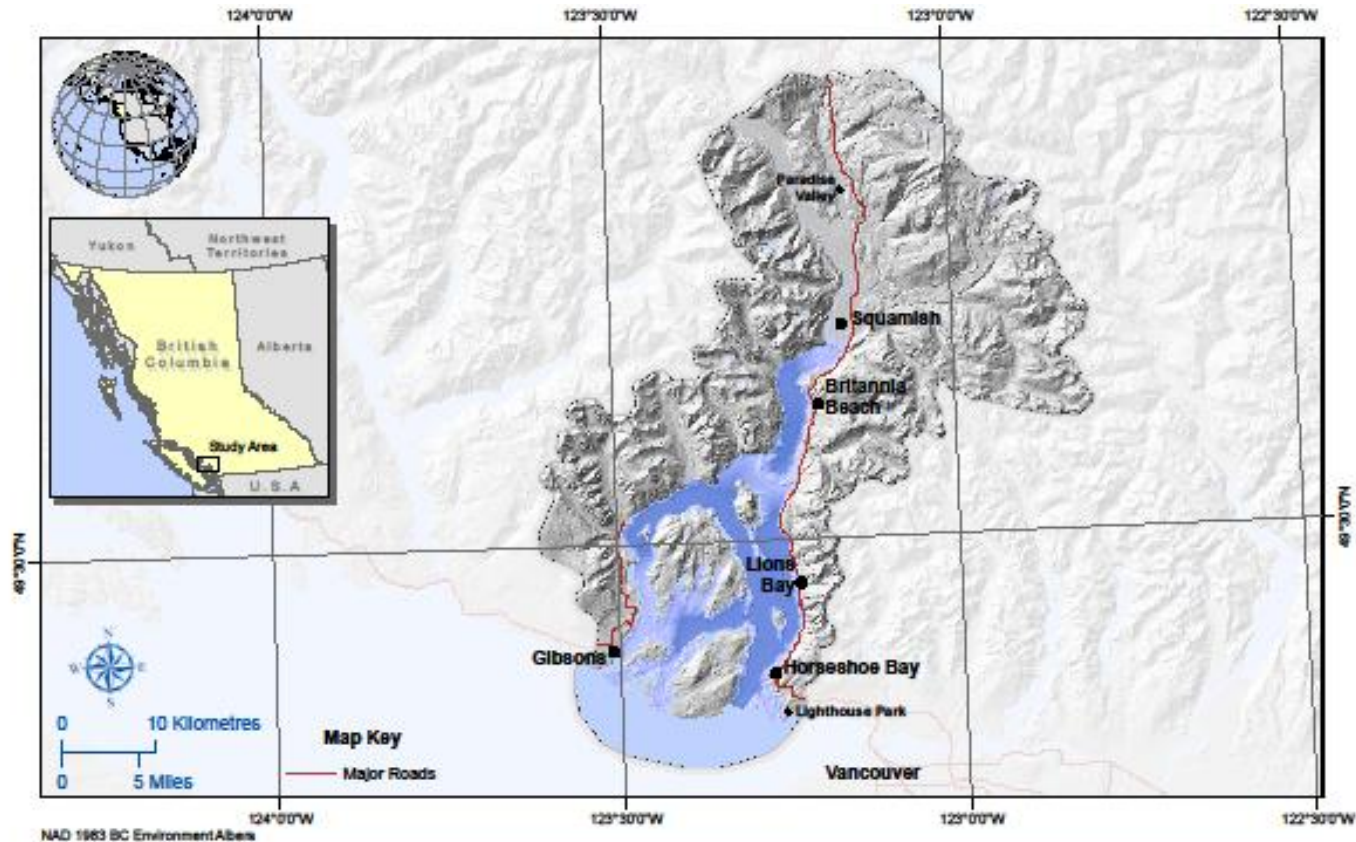
# Study Context

"THE ECONOMY IS A WHOLLY OWNED  
SUBSIDIARY OF THE ENVIRONMENT,  
NOT THE OTHER WAY AROUND."

*-Gaylord Nelson, U.S. Senator and founder of Earth Day*



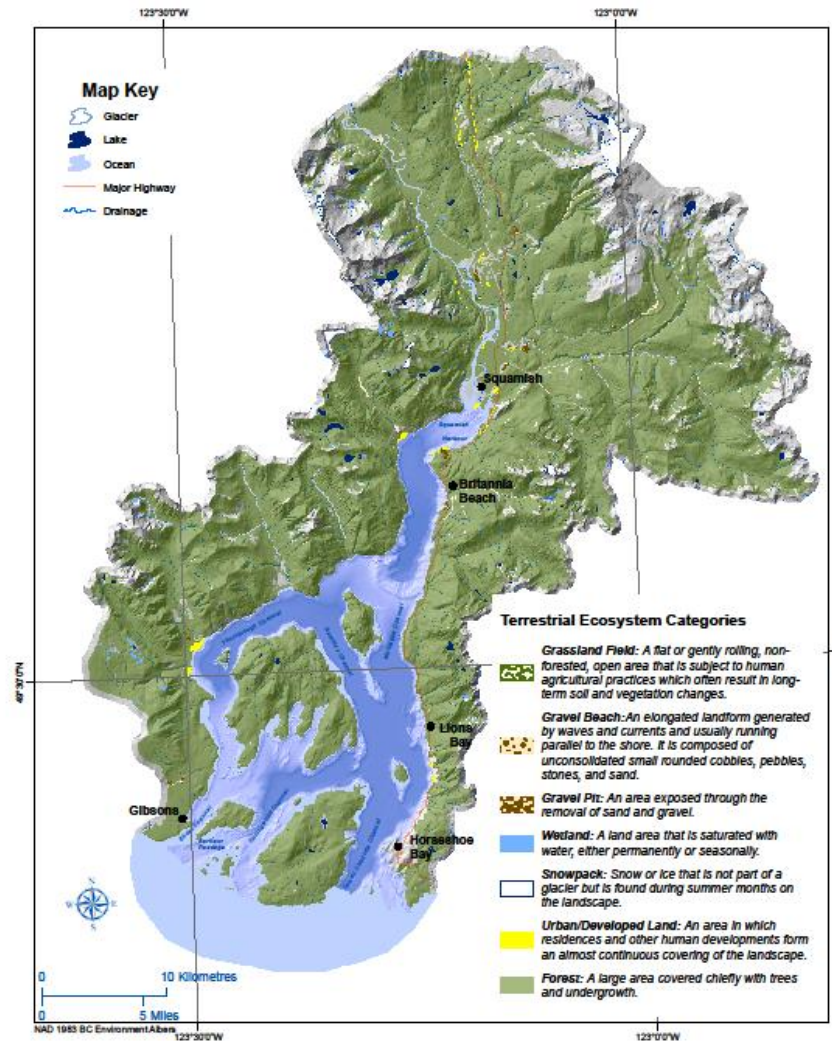
# Study Area



Howe Sound / Txwmswuts Study Area Map, British Columbia: This map shows the study area, known as Howe Sound to the non-indigenous population or Txwmswuts to the Squamish First Nations. It is recognized as the traditional territory of the Coastal Salish Nations. The area runs from Lighthouse Park, up the eastern coastline of the fjord, past the northern border of Squamish and Paradise Valley, and back down the western coastline to Gibsons. The study area also includes the marine area and islands within.



# Output #1: Maps



Howe Sound Terrestrial Ecosystem Map: This map, based upon data obtained from the BC Ministry of Environment's Terrestrial Ecosystem Mapping and the BC Ministry of Forests' Vegetation Resources Inventory, shows the distribution of important terrestrial ecosystems within the study area.

# Output #2: Ecological Values



## Top Ecological Services/Hectare



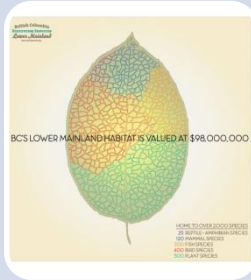
### Tourism & Recreation

valued at a maximum of \$304,000 per hectare per year



### Disturbance Regulation

valued at a maximum of \$84,000 per hectare per year



### Habitat

Valued at a maximum of \$66,000 per hectare per year

## Top Ecosystems/Hectare



### Beaches

valued at a maximum of \$225,105 per hectare per year



### Wetlands

valued at a maximum of \$172,946 per hectare per year

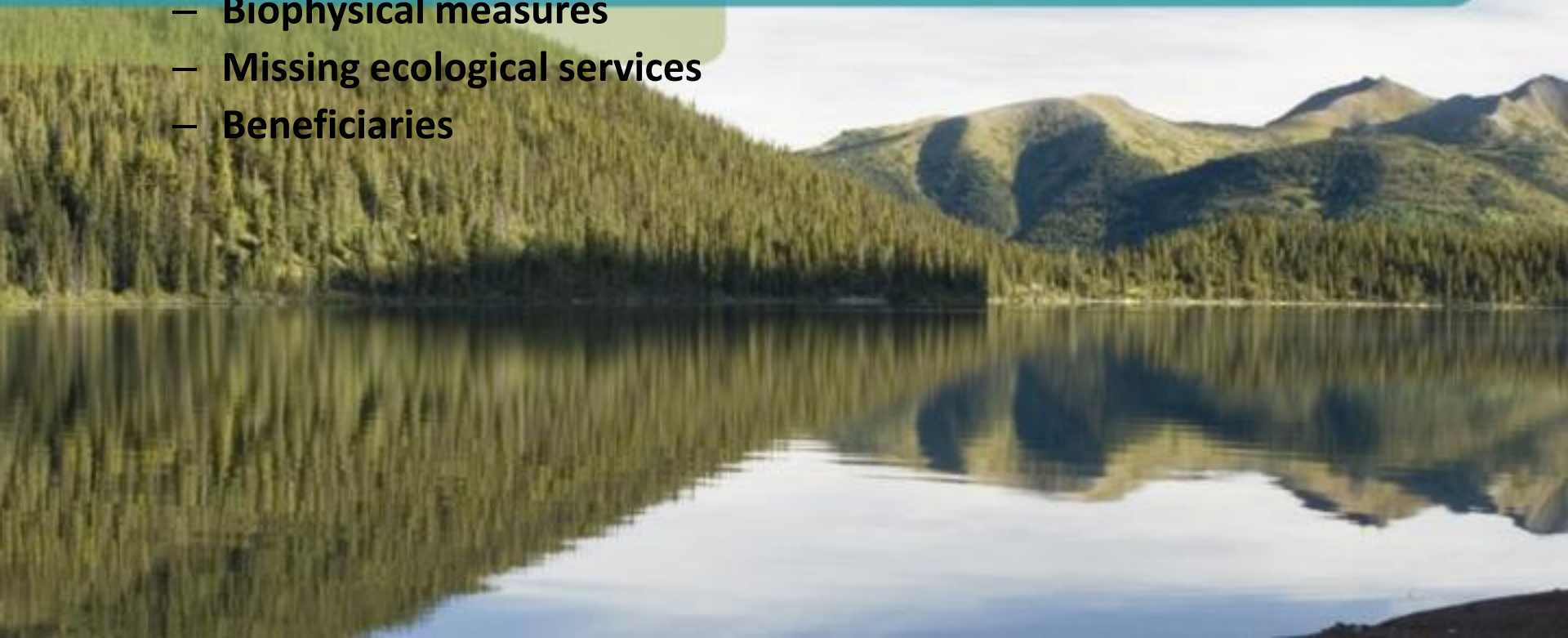


### Eelgrass Beds

valued at a maximum of \$87,203 per hectare per year

# Study Applications

- **First Nations government: Referrals; land & marine planning**
- **Provincial/Federal government: CEA; EIA; Financial Assurances**
- **Local governments: Asset management; infrastructure planning**
- **Scientists/Researchers/Students: Direct research**
  - **Biophysical measures**
  - **Missing ecological services**
  - **Beneficiaries**





If we take care of nature,  
nature will take care of us.

Michelle Molnar

Environmental Economist & Policy Analyst

[mmolnar@davidsuzuki.org](mailto:mmolnar@davidsuzuki.org)

604 732 4228 x1259