



BRITISH
COLUMBIA

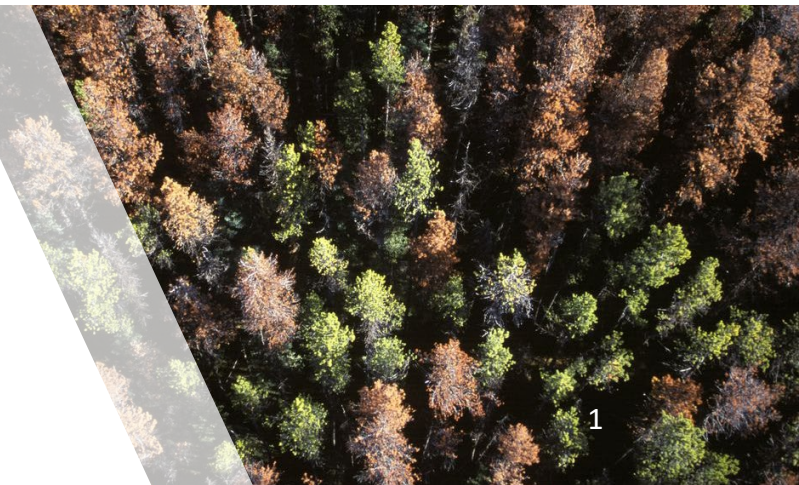
CEF Cumulative
Effects
Framework

CUMULATIVE EFFECTS UPDATES & REGIONAL IMPLEMENTATION

HOWE SOUND COMMUNITY CE WEBINAR

MARCH 5, 2021

JEFF JUTHANS, MONICA PEARSON AND VERONICA VILLAR-SINGH





Overview

- Update on Provincial CE Protocols
- Evolution towards Stewardship Baseline Objectives Tools (SBOTs)
- SBOT Demonstration (Veronica)

BC Cumulative Effects Framework



WHAT IS THE BC CEF?

A framework for how we assess values and manage for cumulative effects.

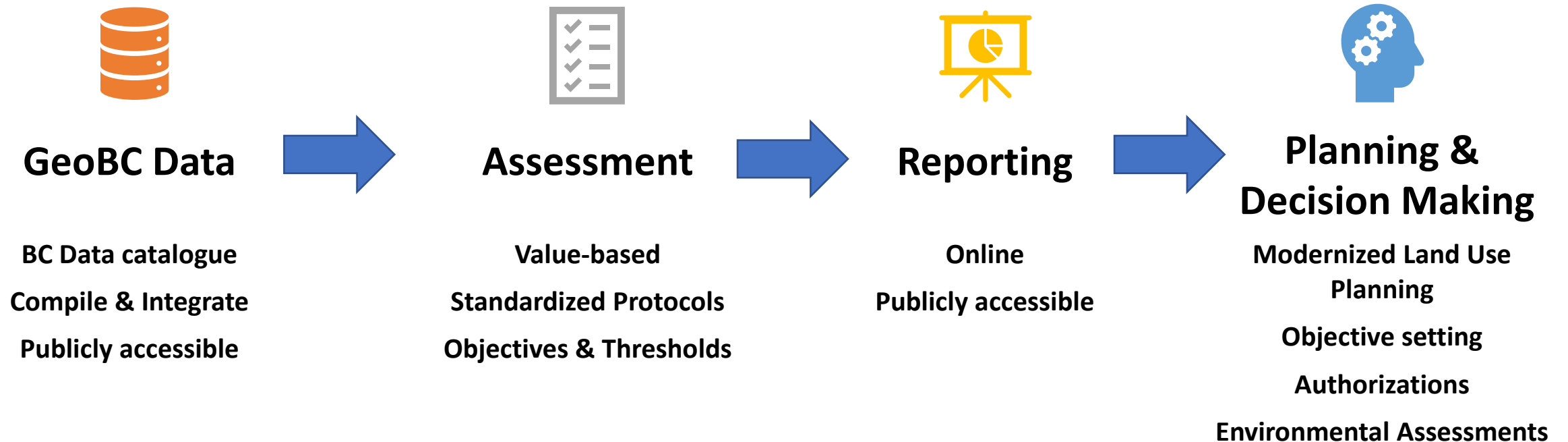
WHAT ARE THE GOALS?

- Improve ability to manage values and achieve desired conditions
- Better information to support:
 - consideration of Indigenous rights and interests
 - planning & decision making

HOW IS IT IMPLEMENTED?

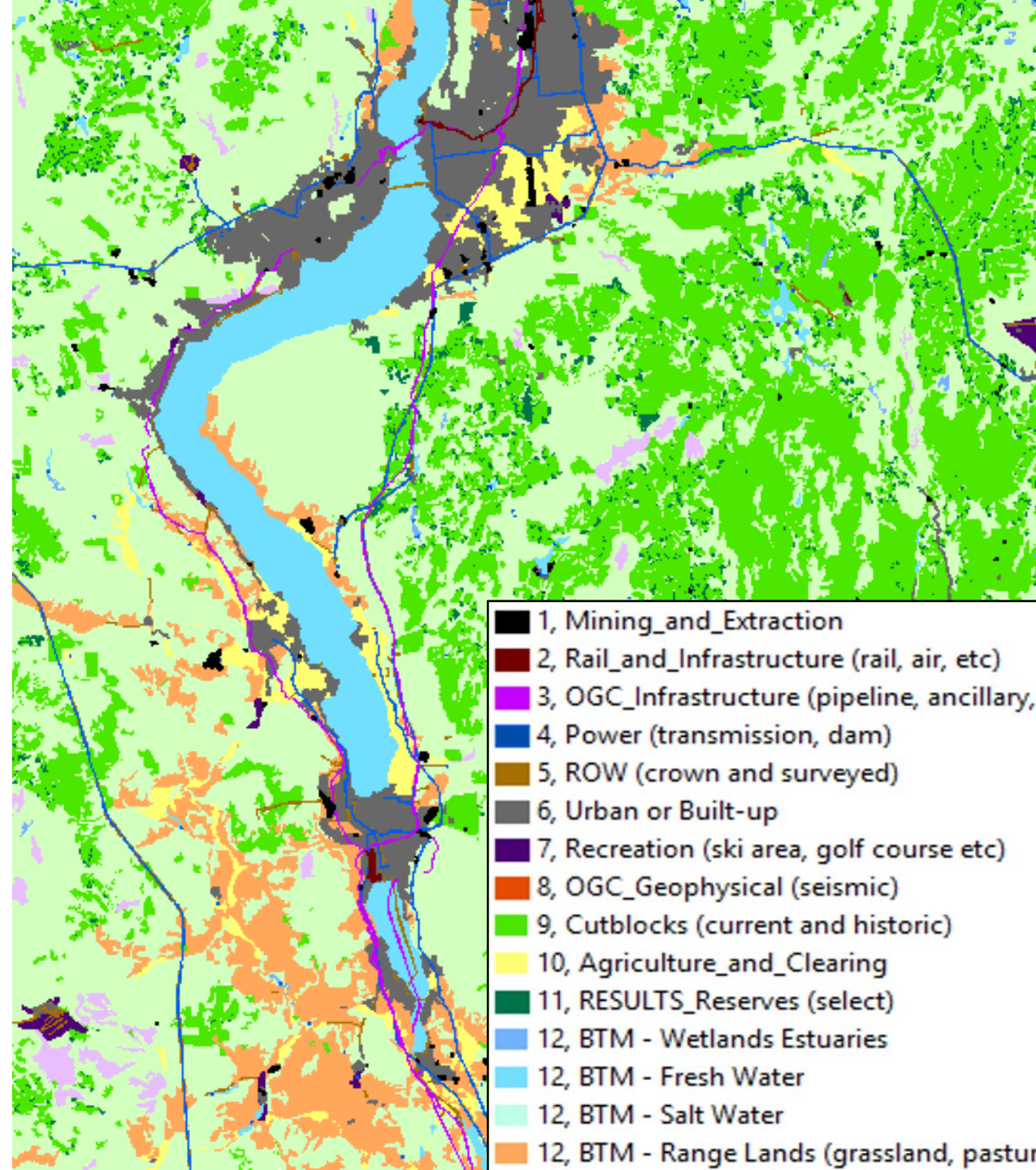
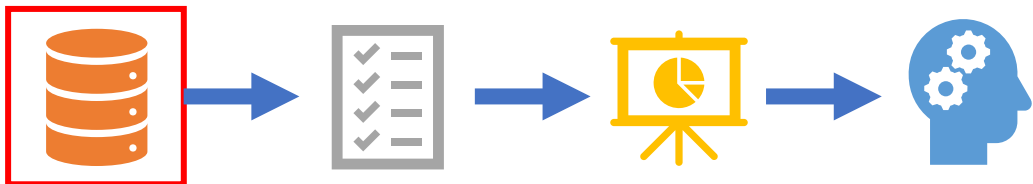
- Provincial policy and assessments developed at Headquarters
- Applied in planning and decision making in Regions

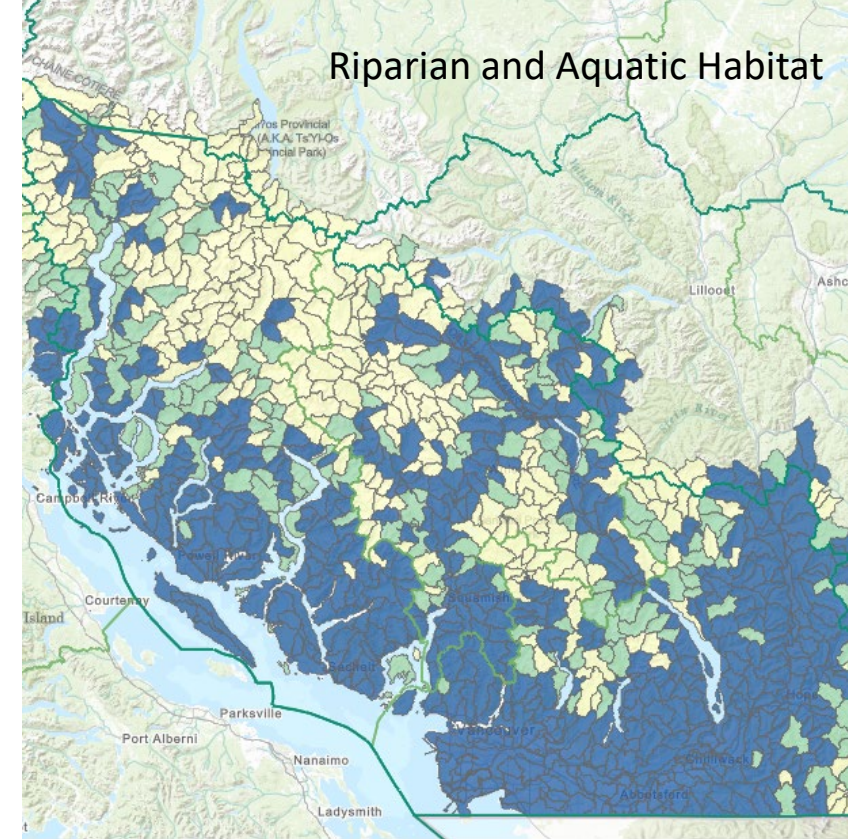
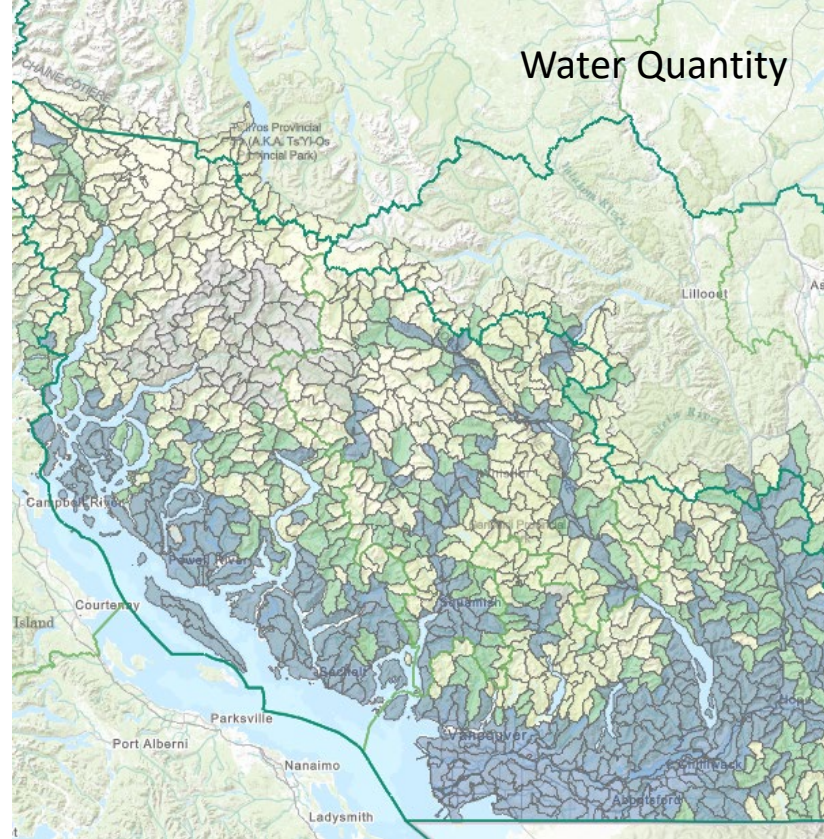
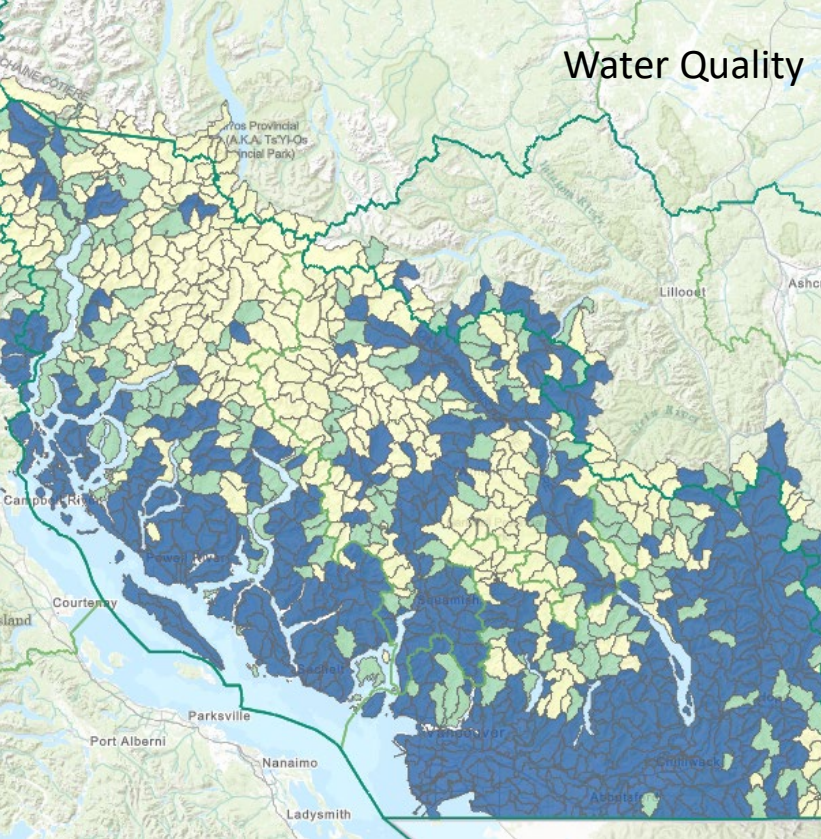
Cumulative Effects Framework Process



Data: Disturbance Layer

- Compiled datasets that contribute to defining human disturbance on the land base
- Disturbance types and ranking shown in the legend on the right
- Roads are a separate data layer (consolidated roads)
- Available spring 2021 (finalizing documentation)





Assessment: Aquatic Ecosystems Cumulative Effects

- Updated protocols (Dec 2020)
- 2018 Data
- Models, not measured in the field

- Core components:
 - Water Quality (Sedimentation Risk)
 - Water Quantity (Flood risk)
 - Aquatic Habitat (Intactness)

Provincial CE Values - Update

Grizzly Bears

Interim Protocol V1.2 & Assessment Complete Oct 2020

Old Growth Forests

Interim Protocol V1.1 Dec 2017

Aquatic Ecosystems

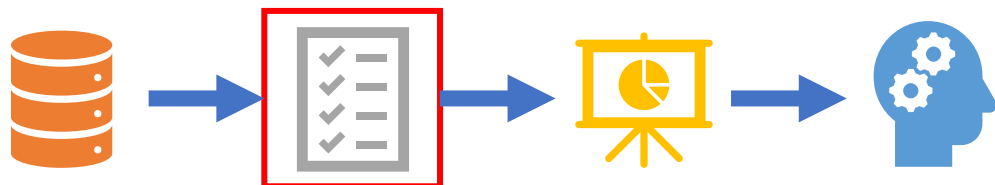
Interim Protocol v1.3 & Assessments Complete Dec 2020

Forest Biodiversity

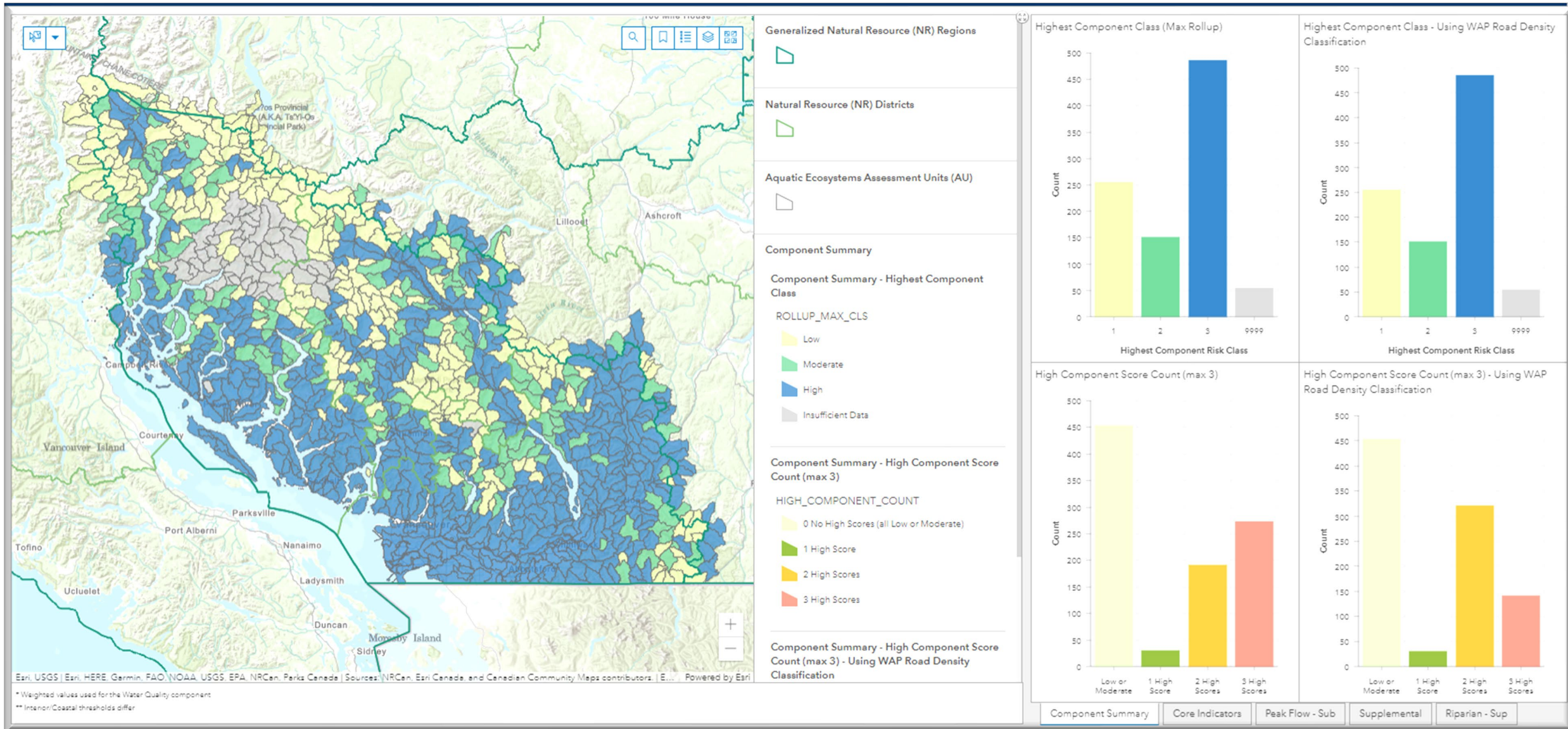
Interim Protocol and Assessment V1.0 Complete Sept 2020

Moose

Interim Protocol & Assessment V1.0 May 2018

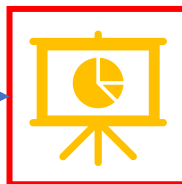
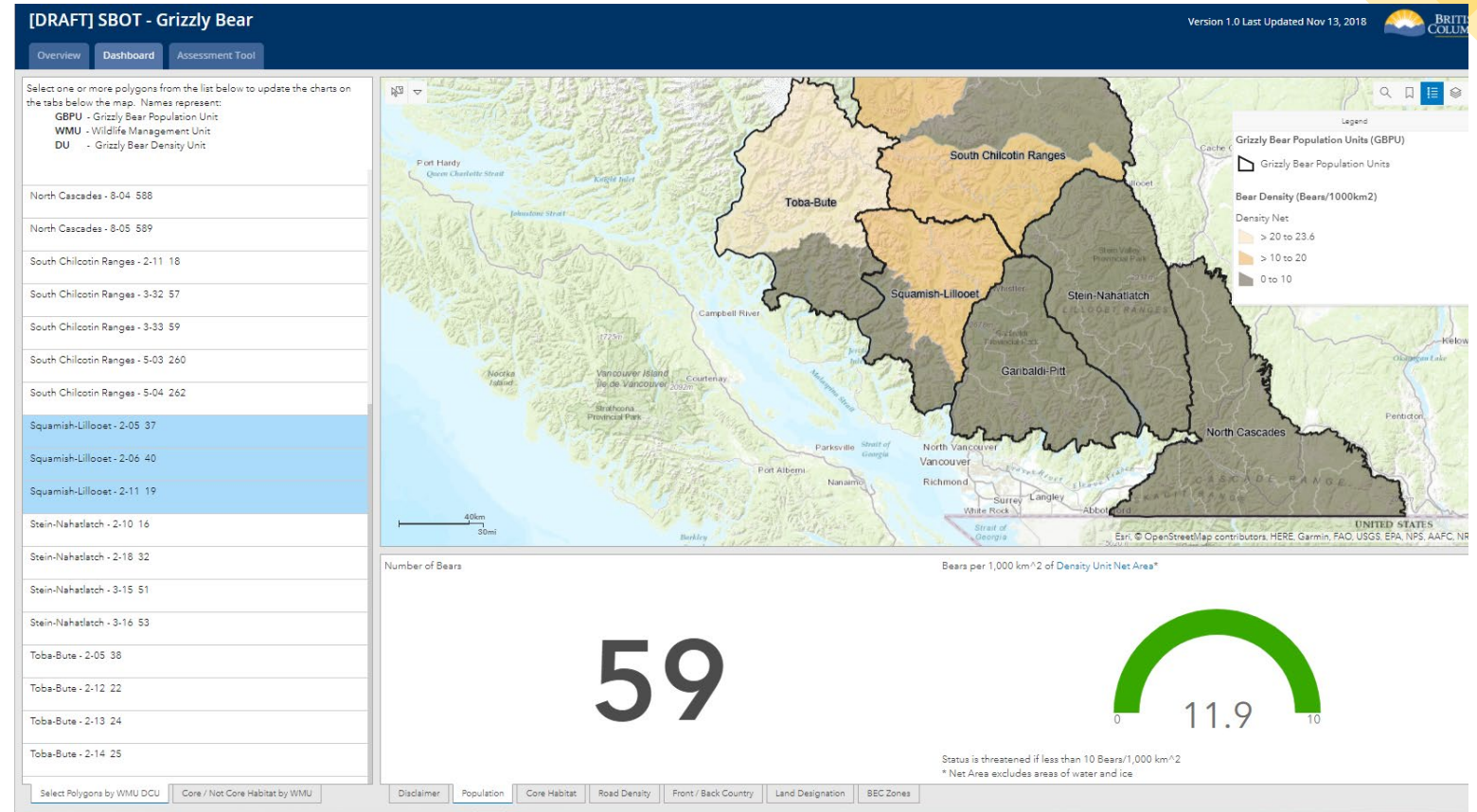


Reporting: Transition to interactive web-maps



Reporting: Stewardship Baseline Objectives Tools (SBOTs)

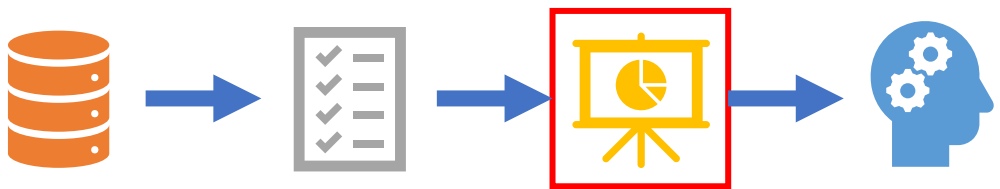
- BC Geo Data
- **Monitoring / Field Data**
- Legal and Non-Legal Objectives
- Analysis
- Outcomes
- **Assessment Tools**
- Management Guidance
- **Decision-support tools**



South Coast Values – Reporting Status

CEF	Northern Spotted Owl	Public
	Grizzly Bear	Public
	Oregon Spotted Frog	Public
	Roosevelt Elk	Public
	White Sturgeon	Public

CEF	Old and Mature Forest	Final Review
	Western Painted Turtle	Internal Draft
	Northern Goshawk	Internal Draft
	Marbled Murrelet	Internal Draft
CEF	Mountain Goats	In Development
	Aquatic Ecosystems	In Development
	Steelhead	In Development
	Small Lakes	In Development
	Wolverine	In Development
CEF	Forest Biodiversity	Scoping



SBOTS: Decision Support

REPORTING ONLINE

- Value Status Dashboards (ArcGIS Online)

ASSESSMENT TOOLS

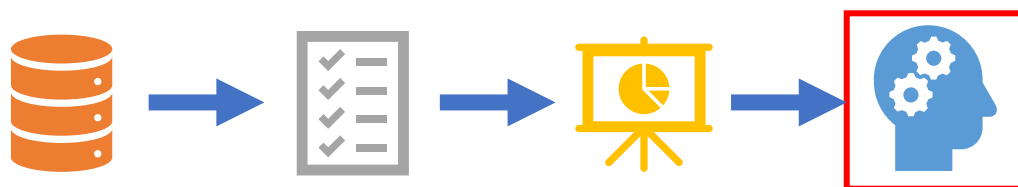
- Compile relevant information for Area of Interest & Authorization

★ REFERRAL REPORTS

- Integrate assessment report with **biologist/specialist recommendations**

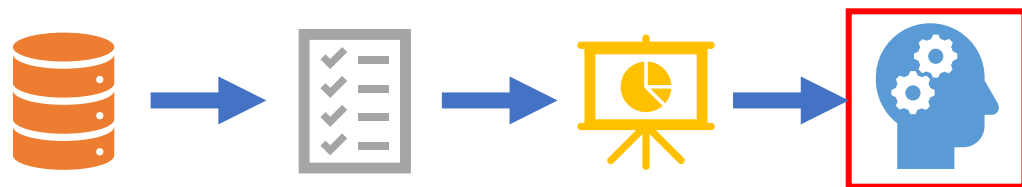
★ MULTI-VALUE ASSESSMENT TOOLS

- Forest Values SBOT – Forest Biodiversity +
- Watershed Condition SBOT – Aquatic Ecosystems CEF+





SBOTs: Communication



- Available to Nations, Communities, eNGOs, public
- Presented in a way that:
 - **TELLS THE STORY OF THE VALUE**
 - **IS COMPLETE AND TRANSPARENT**
 - **IS MEANINGFUL AND USEFUL**
 - **INFORMS AND INVITES DISCUSSION, COLLABORATION AND SHARED OBJECTIVE- SETTING**

Stewardship Baseline Objectives Tools

<https://www2.gov.bc.ca/gov/content/environment/natural-resource-stewardship/resource-stewardship-tools/sbot>

Thank you

- Jeff Juthans
Land and Resource Specialist – Regional Initiatives
South Coast Region
Jeff.Juthans@gov.bc.ca
- Monica Pearson
Section Head, Regional Initiatives – Resource Management
South Coast Region
Monica.Pearson@gov.bc.ca
778-572-2256
- Veronica Villar-Singh
Land and Resource Specialist – Regional Initiatives
South Coast Region
Veronica.VillarSingh@gov.bc.ca